



Indiana
FURNITURE

Genuine Leather LOOK BOOK

 CORTINA
LEATHERS

Azzurro



The Azzurro collection embodies modern Italian leather aesthetic: refined and sleek, with uniform texture and consistent, sophisticated color. The true beauty of Azzurro comes from within: authentic Italian craftsmanship creates a rare combination of a sumptuous, soft hand with outstanding abrasion, stain, and soil resistance. The extensive color line, including bold brights, soft pastels, dozens of browns, and an impressive 20 warm and cool light neutrals, reflects the variety of saturated and soft hues seen along Italy's iconic western shoreline. Made only on quality European hides, Azzurro's modern Italian design has a smooth grain, matte finish, and consistent color for superior cutting yields. Azzurro is a competitively priced genuine leather made to withstand the rigors of high-traffic interiors.



Technical Specifications

Origin	Italy
Raw Material	Top grain, European bovine
Leather Type	Semi-aniline
Average Hide Size	50 – 55 sq.ft.
Thickness	1.2 – 1.4 mm
Abrasion Resistance	ASTM D7255: CS10 Wheel Taber 1000 cycles/ 1000 gram weight
Light Fastness	ISO 105-B02: Blue Wool Scale ≥ 4
Wet Crocking	ASTM D5053: Class 4
Flame Resistance	NFPA 260: Class 1; CAL TB117–2013
Environmental Note	Azzurro is produced in a tannery which has achieved a silver rating as audited to the Leather Working Group environmental stewardship and traceability standards. Further enhancing its sustainability profile, Azzurro is finished without the use of solvents or lead, emits low VOCs, and has achieved an Indoor Advantage Gold certificate from SCS.



samples@cortinaleathers.com

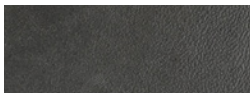
Always order samples before choosing as screen and printed colors may not be exactly representative of leather color.

Hand-crafted leather is a natural product and may exhibit natural markings and variations in grain, texture and color—hallmarks of quality and authenticity.

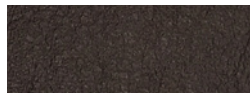
Indiana
FURNITURE
indianafurniture.com



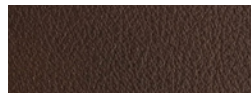
The warmth, softness, and gently-aged look of the Café leather line invites you to sink into your chair and enjoy your favorite drink without fear of spills or stains. With its light pebble finish, wax treatment and two-tone aniline dye, there is a depth, variation, and clarity to Café's rich and natural colors that is only found with true aniline leathers. And the Crypton® protective finish gives the leather an unmatched level of stain resistance and cleanability. Go ahead – enjoy your latte worry-free in your favorite chair.



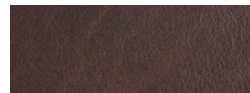
CAFECY-9805 Earl Gray



CAFECY-9806 French Silk



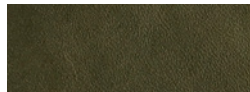
CAFECY-9807 Candied Pecan



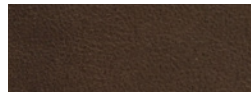
CAFECY-9808 Chocolate Mousse



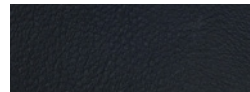
CAFECY-9809 Chai



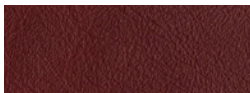
CAFECY-9810 Olive



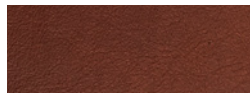
CAFECY-9511 Espresso Bean



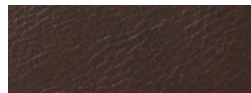
CAFECY-9864 Blueberry Tart



CAFECY-9865 Cherry Pie



CAFECY-9873 Spice



CAFECY-9907 Fig

Technical Specifications

Origin	USA
Raw Material	Top grain, aniline drum dyed
Leather Type	Aniline, protected by Crypton®
Average Hide Size	48 – 52 sq.ft.
Thickness	1.0 – 1.2 mm
Abrasion Resistance	ASTM D7255: CS10 Wheel Taber 500 Cycles/ 500 gram weight
Light Fastness	ISO 105-B02: Blue Wool Scale ≥ 3
Wet Crocking	ASTM D5053: Class 4
Antibacterial	AATCC 100: 99.9% Reduction of Bacteria – AATCC 4352 Klebsiella Pneumoniae and AATCC 6538 Staphylococcus Aureus
Stain Release	AATCC 130–2000: 5 Rating (Excellent) for Coffee, Wine, Ketchup, Hair Products, Sunscreen, Betadine and Biofluids; Withstands a 5% bleach solution
Flame Resistance	NFPA 260: Class 1; CAL TB117–2013; IMO 2010 FTP Part 8 (A.652(16))
Environmental Note	The Café raw material is produced in a tannery which has achieved a gold rating as audited to the Leather Working Group environmental stewardship and traceability standards. Further enhancing its sustainability profile, Café is finished without the use of solvents or lead, emits low VOCs, and has achieved an Indoor Gold Advantage certificate from SCS.



samples@cortinaleathers.com

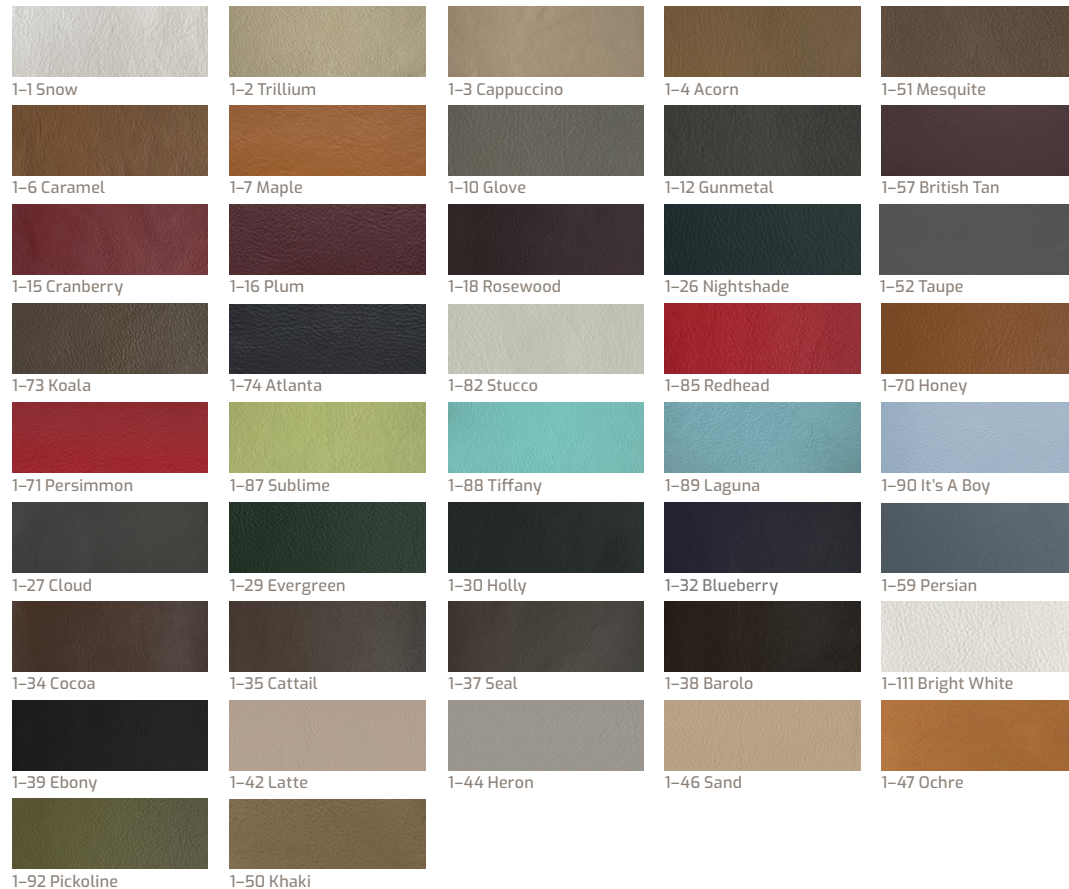
Always order samples before choosing as screen and printed colors may not be exactly representative of leather color.

Hand-crafted leather is a natural product and may exhibit natural markings and variations in grain, texture and color—hallmarks of quality and authenticity.

Caprone



Caprone is a superbly priced Italian leather with a soft hand and a classic grain, prized for its long color line, durability and versatility. An Italian beauty in fashionable and bright colors, Caprone doesn't distress or patina and is also incredibly durable. Caprone remains a top seller because it is regularly upgraded, made ever softer and cleaner in updated colorways. Still made in Italy on quality European hides, Cortina's Caprone is soft and yielding to the touch, yet is highly resistant to stains, wear and color fading due to its strong protective topcoat. IMO approved, Caprone is a beautiful, practical and well-priced mainstay leather ready for every interior application.



Technical Specifications

Origin	Italy
Raw Material	Top grain, European bovine
Leather Type	Pigmented
Average Hide Size	50 – 55 sq.ft.
Thickness	1.0 – 1.2 mm
Abrasion Resistance	ASTM D7255: CS10 Wheel Taber 1000 cycles/ 1000 gram weight
Light Fastness	ISO 105-B02: Blue Wool Scale ≥ 5
Wet Crocking	ASTM D5053: Class 5
Flame Resistance	NFPA 260: Class 1; CAL TB117–2013; IMO 2010 FTP Part 8 (A.652(16))
Environmental Note	Caprone is finished without the use of solvents or lead, emits low VOCs, and has achieved an Indoor Gold Advantage certificate from SCS.



samples@cortinaleathers.com

Always order samples before choosing as screen and printed colors may not be exactly representative of leather color.

Hand-crafted leather is a natural product and may exhibit natural markings and variations in grain, texture and color—hallmarks of quality and authenticity.

Indiana
FURNITURE
indianafurniture.com

Davenport CRYPTON.



Well-protected by our exclusive Crypton finish, Davenport is a beautiful, quality leather with a soft hand and a good drape. Aniline dyed and finished with a durable yet light finish, Davenport is stocked in over 30 colors, making it the perfect choice for a broad range of applications. Natural markings are minimized by enhancing the surface with an embossed grain which maximizes yield and increases the cutting area.



Technical Specifications

Origin	USA
Raw Material	Top grain, aniline drum dyed
Leather Type	Pigmented, protected by Crypton®
Average Hide Size	48 – 52 sq.ft.
Thickness	1.0 – 1.2 mm
Abrasion Resistance	ASTM D7255: CS10 Wheel Taber 1,000 cycles/1,000 gram weight
Light Fastness	ISO 105-B02: Blue Wool Scale ≥ 5
Wet Crocking	ASTM D5053: Class 5
Antibacterial	AATCC 100: 99.9% Reduction of Bacteria – AATCC 4352 Klebsiella Pneumoniae and AATCC 6538 Staphylococcus Aureus
Stain Release	AATCC 130-2000: 5 Rating (Excellent) for Coffee, Wine, Ketchup, Hair Products, Sunscreen, Betadine and Biofluids; Withstands a 5% bleach solution
Flame Resistance	NFPA 260: Class 1; CAL TB117-2013; Boston Fire Code; NY/NJ Port Authority; FMVSS 302; IMO 2010 FTP Part 8 (A.652(16))
Environmental Note	The Davenport raw material is produced in a tannery which has achieved a gold rating as audited to the Leather Working Group environmental stewardship and traceability standards. Further enhancing its sustainability profile, Davenport is finished without the use of solvents or lead, emits low VOCs, and has achieved an Indoor Advantage Gold certificate from SCS.



 **CORTINA**
LEATHERS

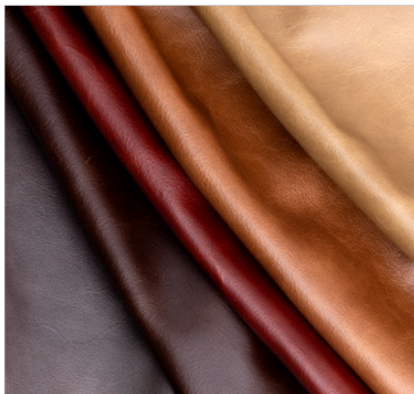
samples@cortinaleathers.com

Always order samples before choosing as screen and printed colors may not be exactly representative of leather color.

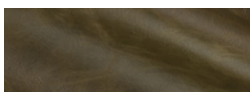
Hand-crafted leather is a natural product and may exhibit natural markings and variations in grain, texture and color—hallmarks of quality and authenticity.

Indiana
FURNITURE
indianafurniture.com

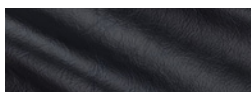
Florence CRYPTON.



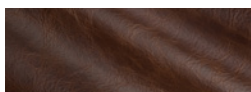
In the heart of Italy lies the inspiration for one of Cortina's best-selling performance leathers — Florence. The warm and familiar colors and gentle distressing evoke the rich tapestry that defines a magical city: cobbled streets, historic facades, and enduring craftsmanship. Made in the U.S. with meticulous attention to detail, Cortina's Florence collection is a symbol of this craftsmanship. In addition to its timeless beauty, it's the practicality of Florence that makes it stand out. Unlike similar aniline distressed leathers, Florence is offered at an attainable price-point and protected with a Crypton® finish built in for cleanability and sustainability with confidence in all interiors. With a waxy, firmer hand, Florence was designed to highlight the natural markings of truly authentic genuine leather and will develop a time-tested story of luxury with a slowly evolving patina.



FLOCY-9688 Boboli Gardens



FLOCY-9689 Mezza Luna



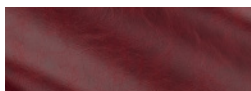
FLOCY-9690 Terra



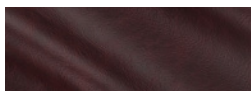
FLOCY-9691 Espresso



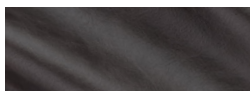
FLOCY-9692 Almond Biscotti



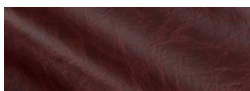
FLOCY-9693 Red Lily



FLOCY-9694 Vino Rosso



FLOCY-9695 Struzzo



FLOCY-9696 Brick Path



FLOCY-9697 Oceano



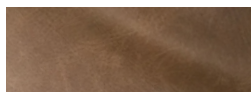
FLOCY-9738 Duomo



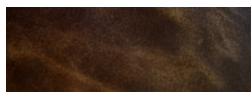
FLOCY-9832 Basilica



FLOCY-9833 Loggia



FLOCY-9834 Lorenzo








FLOCY-9859 Scorza



FLOCY-9988 Black

Technical Specifications

Origin	USA	    
Raw Material	Top grain, aniline drum dyed	
Leather Type	Aniline, protected by Crypton®	
Average Hide Size	48 – 52 sq.ft.	
Thickness	1.0 – 1.2 mm	
Abrasion Resistance	ASTM D7255: CS10 Wheel Taber 500 Cycles/ 500 gram weight	
Light Fastness	ISO 105-B02: Blue Wool Scale ≥ 3	
Wet Crocking	ASTM D5053: Class 4	
Antibacterial	AATCC 100: 99.9% Reduction of Bacteria – AATCC 4352 Klebsiella Pneumoniae and AATCC 6538 Staphylococcus Aureus	
Stain Release	AATCC 130–2000: 5 Rating (Excellent) for Coffee, Wine, Ketchup, Hair Products, Sunscreen, Betadine and Biofluids; Withstands a 5% bleach solution	
Flame Resistance	NFPA 260: Class 1; CAL TB117–2013; Boston Fire Code; NY/NJ Port Authority; IMO 2010 FTP Part 8 (A.652(16))	
Environmental Note	The Florence raw material is produced in a tannery which has achieved a gold rating as audited to the Leather Working Group environmental stewardship and traceability standards. Further enhancing its sustainability profile, Florence is finished without the use of solvents or lead, emits low VOCs, and has achieved an Indoor Gold Advantage certificate from SCS.	



samples@cortinaleathers.com

Always order samples before choosing as screen and printed colors may not be exactly representative of leather color.

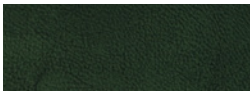
Hand-crafted leather is a natural product and may exhibit natural markings and variations in grain, texture and color—hallmarks of quality and authenticity.

Indiana
FURNITURE
indianafurniture.com

Old English



Old English is a beautiful hand-antiqued leather combining traditional craftsmanship with modern leather tanning and finishing technology. The two-tone coloring is applied completely by hand in our U.S. facility. The surface is then enhanced with a polished sheen, which accents the intricate blending of the color treatments and protects the leather against wear and spills, making Old English a good choice for any application.



COA-91 Green



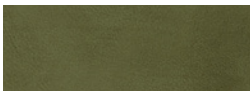
COA-7949 Camel



COA-1263 Brown



COA-1500 Rouge



COA-9482 Light Green



COA-1649 Navy



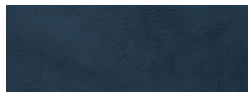
COA-3144 Walnut



COA-9886 Cherry



COG-96 Black



COA-1572 Medium Blue



COA-1520 Blackberry



COA-9887 Grey

Technical Specifications

Origin	USA
Raw Material	Top grain, aniline drum dyed
Leather Type	Pigmented, hand-antiqued
Average Hide Size	48 – 52 sq.ft.
Thickness	1.0 – 1.2 mm
Abrasion Resistance	ASTM D7255: CS10 Wheel Taber 1000 Cycles/ 1000 gram weight
Light Fastness	ISO 105-B02: Blue Wool Scale ≥ 5
Wet Crocking	ASTM D5053: Class 5
Dry Crocking	AATCC 8 and ASTM D5053: Class 4 or better
Blocking	TMS 311 3121.1: Separate with ease and no finish damage
Elongation	ASTM D2208: 40% maximum at 100 lbs.
Tear Strength	ISO 3377: 100 lb. minimum
Flexibility	ASTM D2097: 70,000 cycles
Flame Resistance	NFPA 260: Class 1; CAL TB117–2013; Boston Fire Code; NY/NJ Port Authority; IMO 2010 FTP Part 8 (A.652(16))
Environmental Note	The Old English raw material is produced in a tannery which has achieved a gold rating as audited to the Leather Working Group environmental stewardship and traceability standards. Further enhancing its sustainability profile, Old English is finished without the use of solvents or lead, emits low VOCs, and has achieved an Indoor Gold Advantage certificate from SCS.



samples@cortinaleathers.com

Always order samples before choosing as screen and printed colors may not be exactly representative of leather color.

Hand-crafted leather is a natural product and may exhibit natural markings and variations in grain, texture and color—hallmarks of quality and authenticity.

Indiana
FURNITURE
indianafurniture.com

Vernazza



Featured in over 50 colors, Vernazza's beautiful palette is inspired by the hues of Vernazza, Italy. Brightening the landscape, the colorful homes of this quaint village speckle the mountainside with vibrancy. Vernazza's light texture, slightly polished surface and luxurious hand produce exceptional cutting yields making it an ideal option for a wide range of upholstery applications.



Technical Specifications

Origin	Italy
Raw Material	Top grain, European bovine
Leather Type	Pigmented
Average Hide Size	50 – 55 sq.ft.
Thickness	1.0 – 1.2 mm
Abrasion Resistance	ASTM D7255: CS10 Wheel Taber 500 cycles/1000 gram weight
Light Fastness	ISO 105-B02: Blue Wool Scale ≥ 5
Wet Crocking	ASTM D5053: Class 5
Flame Resistance	NFPA 260: Class 1; CAL TB117–2013; IMO 2010 FTP Part 8 (A.652(16))
Environmental Note	Vernazza is lead free, emits low VOCs, and has achieved an Indoor Gold Advantage certificate from SCS.



samples@cortinaleathers.com

Always order samples before choosing as screen and printed colors may not be exactly representative of leather color.

Hand-crafted leather is a natural product and may exhibit natural markings and variations in grain, texture and color—hallmarks of quality and authenticity.

Indiana
FURNITURE
indianafurniture.com