

Strut Legs | Indiana FURNITURE

Assembly Instructions

Components:

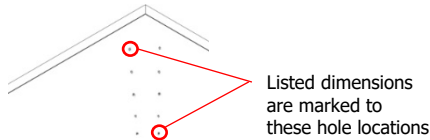
Strut Legs (Total Quantity Varies by Application)
10 – Screw #12 x 1 PPH Black (For Each Leg)

Stiffener bar (when applicable, see Steps 5-8)
4 – Washers
9 – 1-5/8" Screws

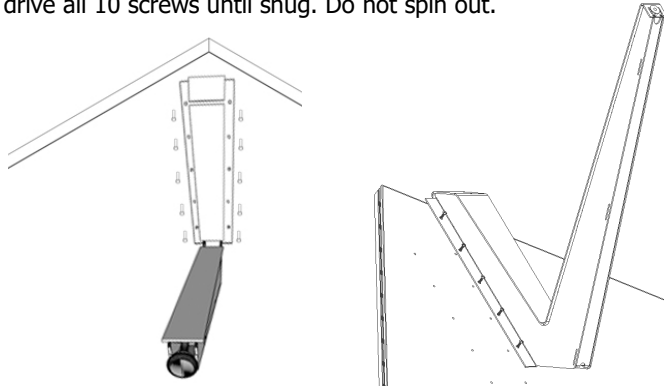
Note: Strut Legs should only be used with tops from Indiana Furniture.

Assembly:

- 1 Find corresponding top size/model in listing on next page. This information will provide number of strut legs and approximate hole locations. See corresponding image on next page.
- 2 Locate pre-drilled leg hole locations or measure and mark leg locations on top undersurface.

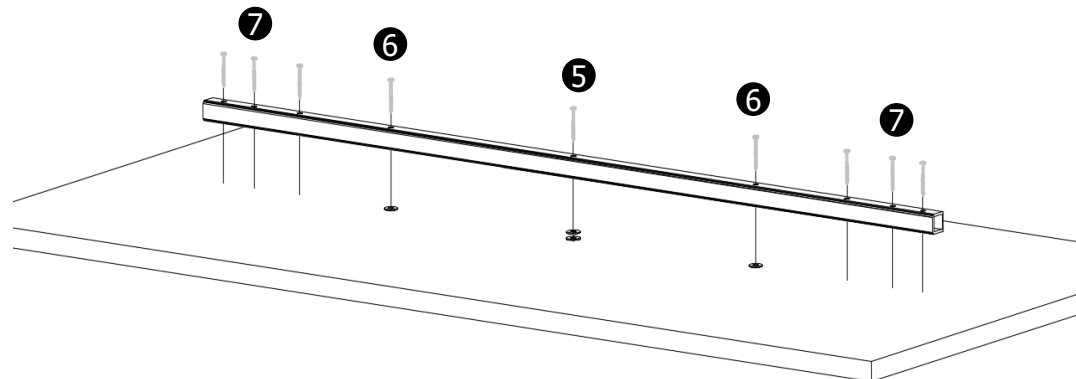


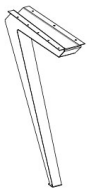
- 3 Align holes on leg mounting plate with holes on top undersurface and drive all 10 screws until snug. Do not spin out.



- 4 Repeat steps for remaining legs until table is complete.

- 5 Stack two washers and use as a spacer between stiffener bar and tabletop. Attach first screw through the center hole of stiffener bar and through two washers attaching near center of top.
- 6 Use one washer as a spacer for the next hole to the left and right of the center hole. Drive screws in partially to maintain location.
- 7 Drive remaining six outside screws in partially to lock in location.
- 8 The washers are being used to create tension in the stiffener bar that will not allow the top to sag in the center. To make this work it is best to work back and forth from left and right to slightly tighten the screws to create a slight bend in the stiffener bar until all screws are snug.

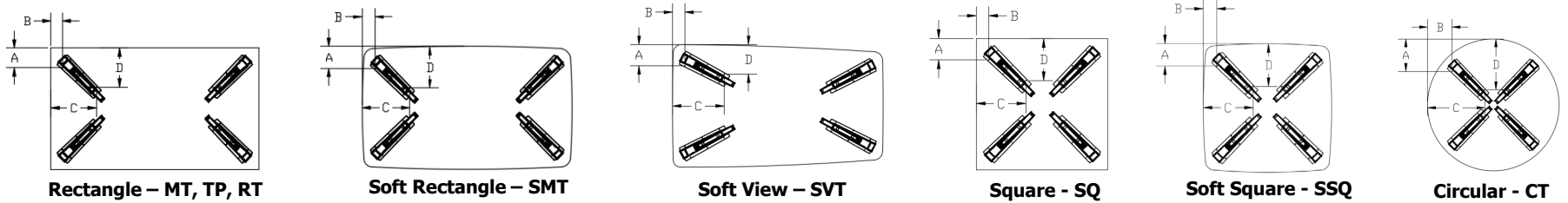




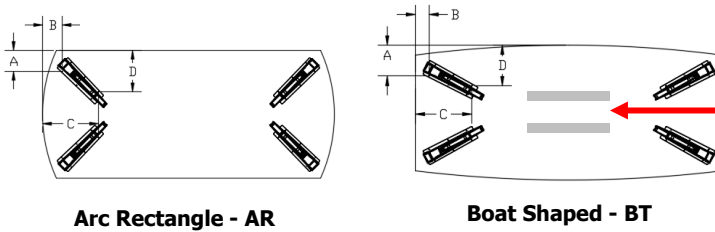
Strut Legs | Indiana FURNITURE

Assembly Instructions

4 Legs

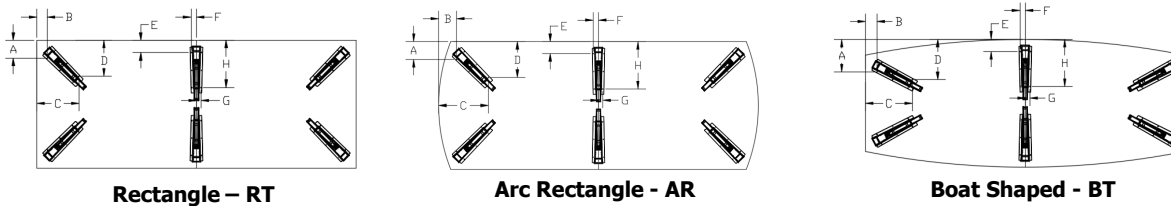


Applications using 2 Strut Legs should follow Hole Locations and Stiffener Bars for 4 Legs.

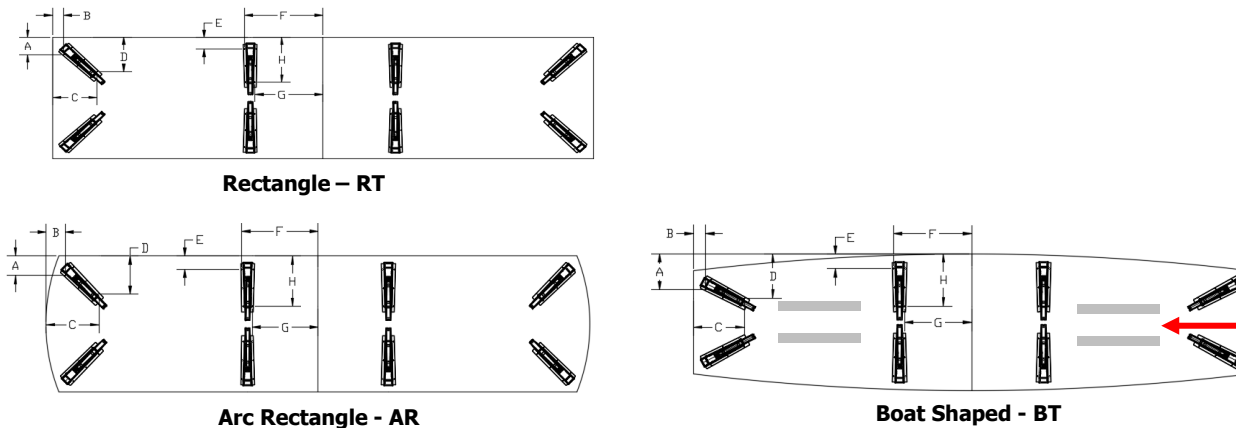


Example of Placement for Two Stiffener Bars when Recommend for Use.

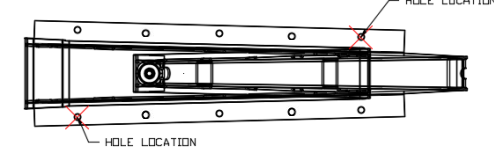
6 Legs



8 Legs



Dimensions are marked to these hole locations:



Example of Placement for Four Stiffener Bars when Recommend for Use.