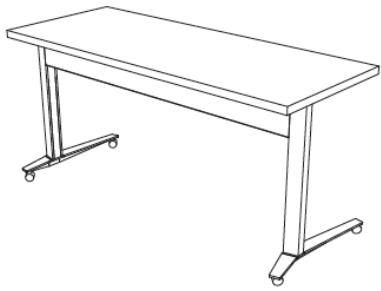
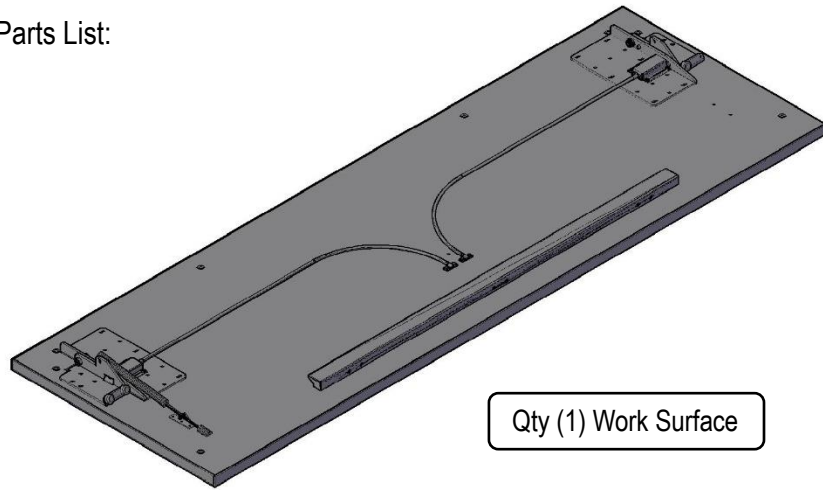


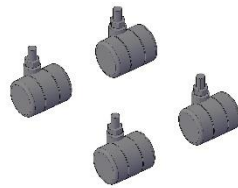
## Assembly Instruction



Parts List:



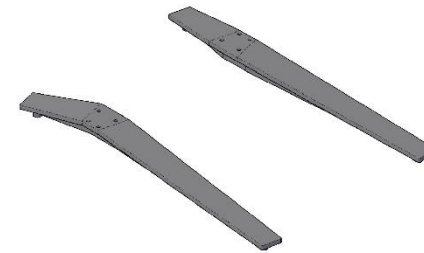
Qty (1) Work Surface



Qty (4) Castors



Qty (1) Post & Trough



Qty (1) Pair of Feet

### Hardware Included

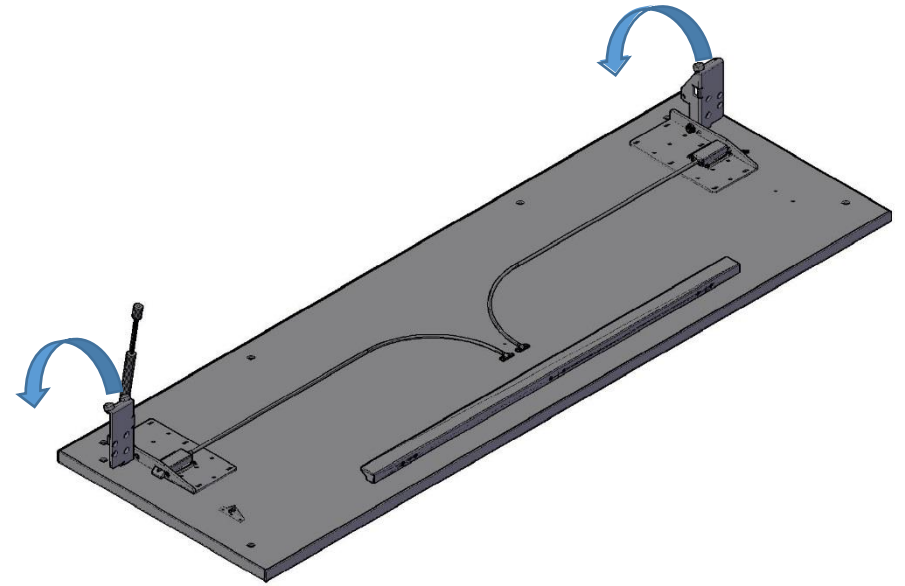
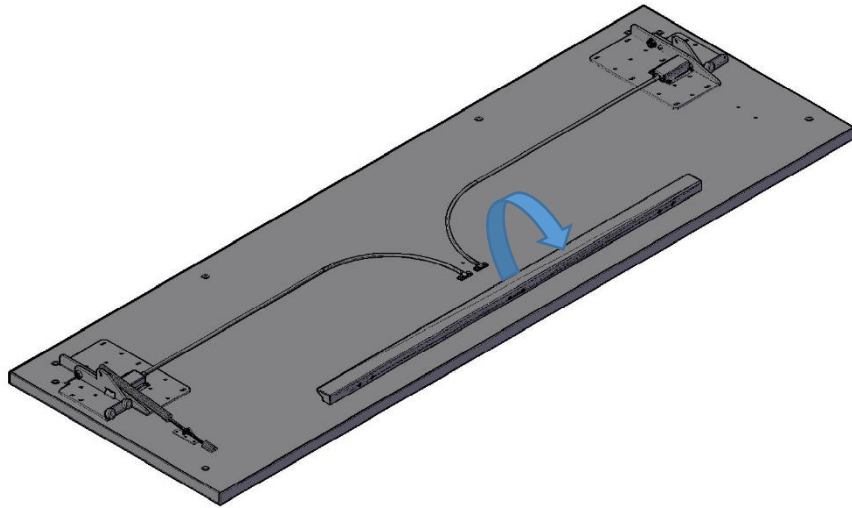
- (14) #12 x 1" Pan Head Wood Screws
- (16) 1/4"-20 x 3/4" Flat Head Cap Screw

### Tools Required

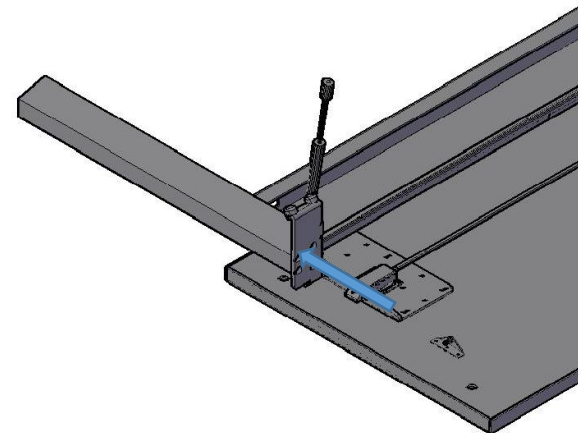
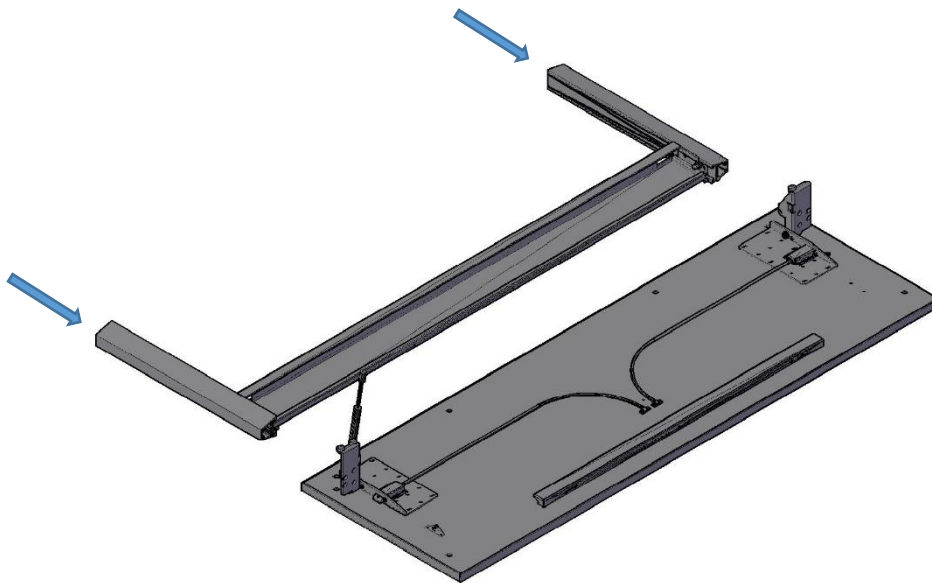
- Drill with phillips screw bit
- 5/32" Allen Wrench
- 1/2" Wrench

## Assembly Instruction

**Step 1:** Activate the flip mechanism by rotating the lever bar to rotate the top plates.



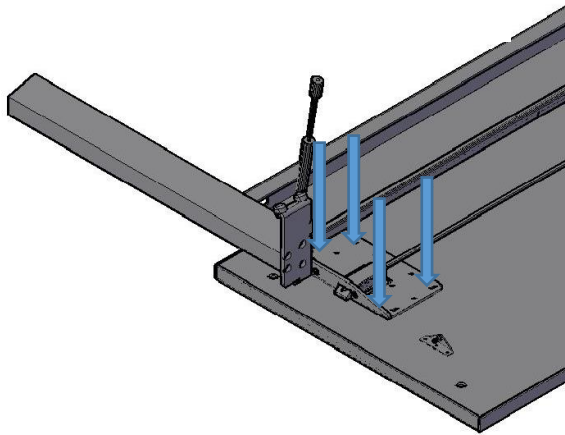
**Step 2 :** Next, Bolt the top plates on the legs using the (8) 1/4"-20 x 3/4" Flat Head Cap Screws and the 5/32" Allen Wrench



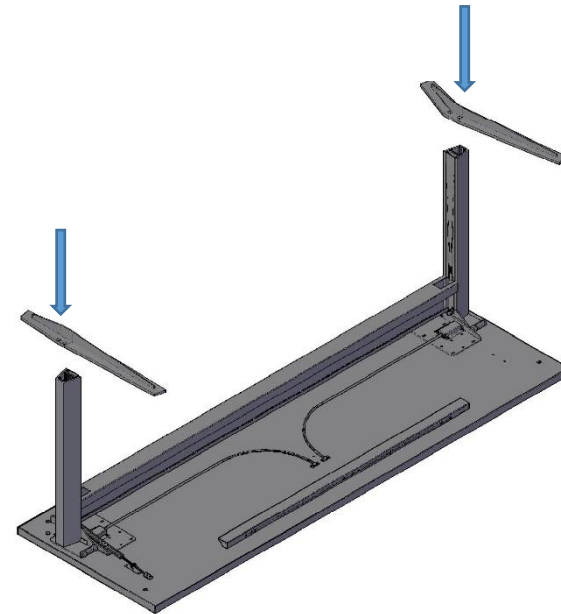
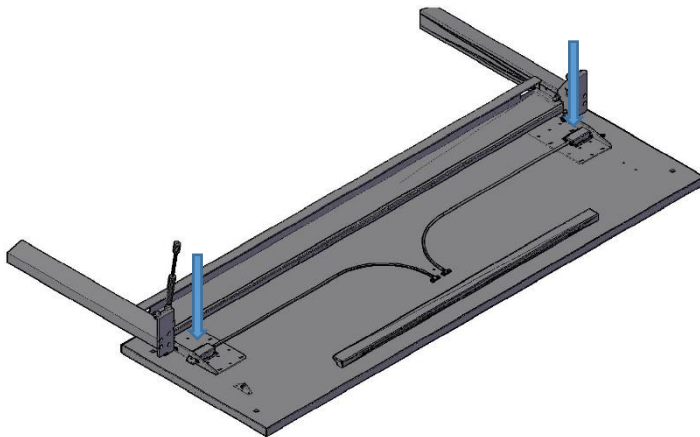
Install Flat Head Cap Screws, (4) Per Leg

## Assembly Instruction

**Step 3** : Tighten up the 8 Screws in the latch plate going into the work surface

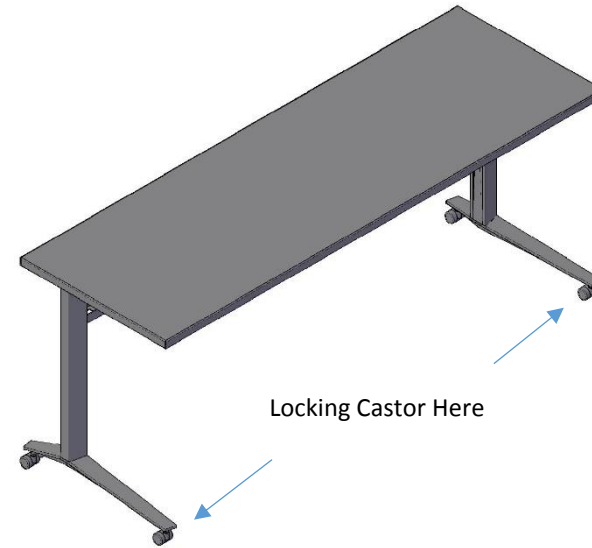
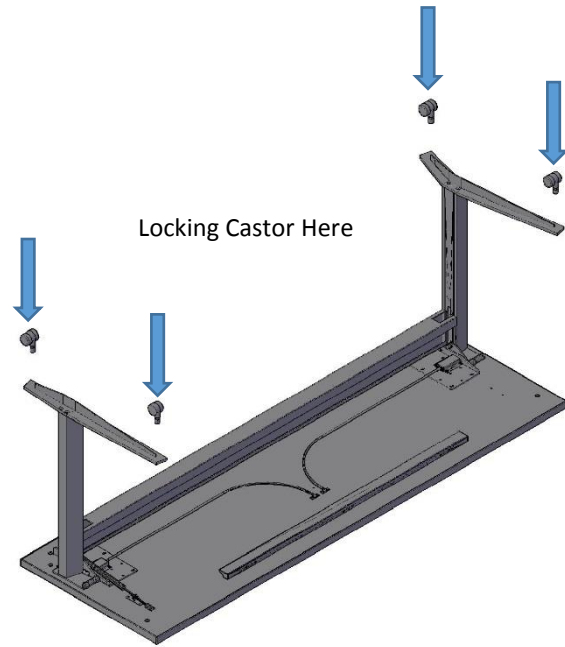


**Step 4** : Using the provided #12 x 1" Pan Head Screws, install the remaining 14 screws in the latch plate. Then attach the feet to the leg columns using the 1/4"-20x3/4" Flat head Cap Screws



## Assembly Instruction

**Step 5 :** Using the ½" wrench screw on the castors. **Important! :** The Locking Castors are to be installed on the user side



**Note:** The table comes equipped with removable wire management covers as shown below. If it is necessary to route wires down the leg, you may rotate the wire management cover so the notch is at the bottom in order for wires to exit.

