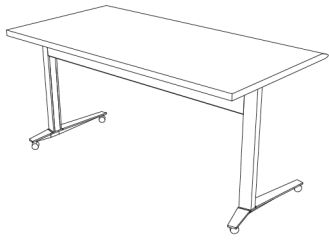
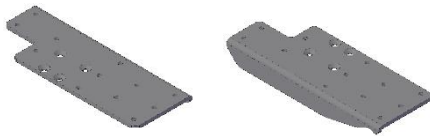
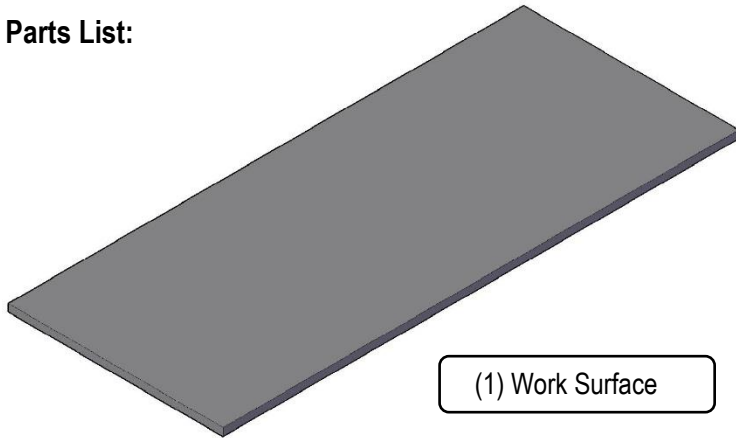


Assembly Instruction



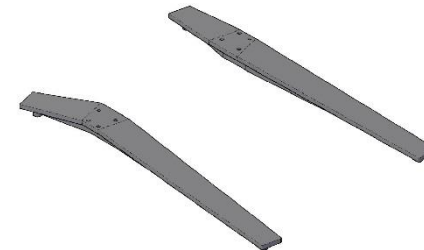
Parts List:



Qty (2) Top Plates



Qty (1) Post & Trough



Qty (2) Pair Feet

Hardware Included

- (24) #12 x 1" Pan Head Wood Screws
- (16) 1/4"-20 x 3/4" Flat Head Cap Screw

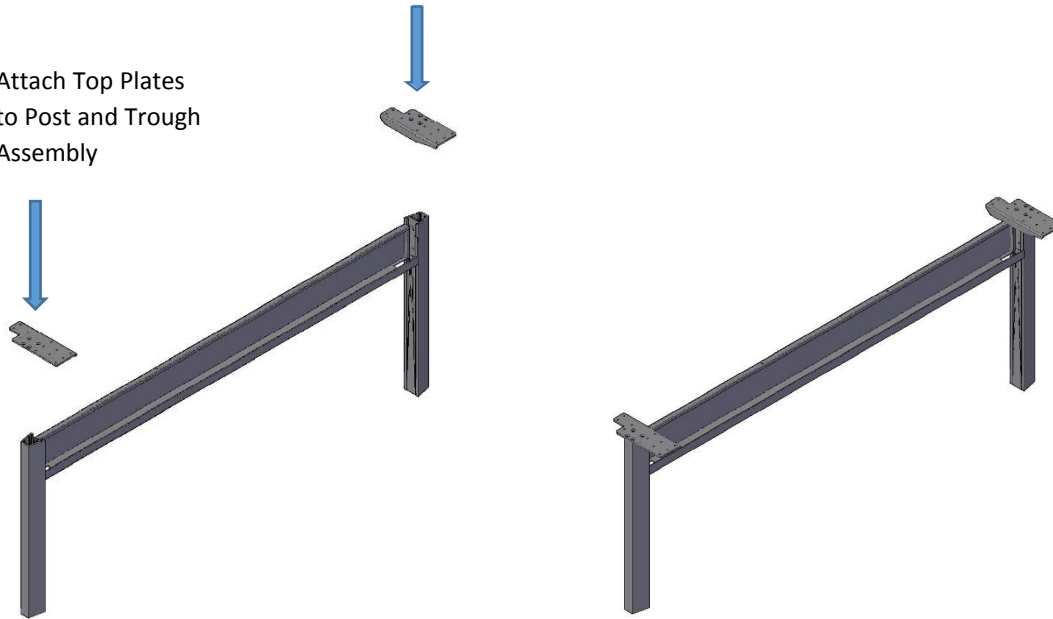
Tools Required

- Drill with phillips screw bit
- 5/32" Allen Wrench

Assembly Instruction

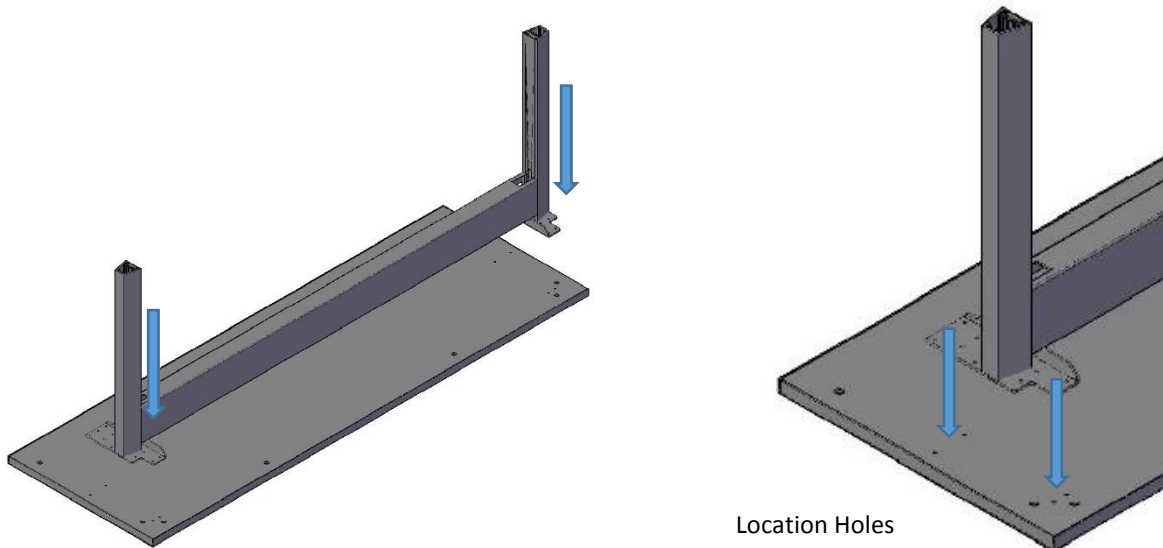
Step 1: Bolt the top plates on the Post and Trough assembly using the 1/4"-20 x 3/4 Flat Head Cap Screws

Attach Top Plates
to Post and Trough
Assembly

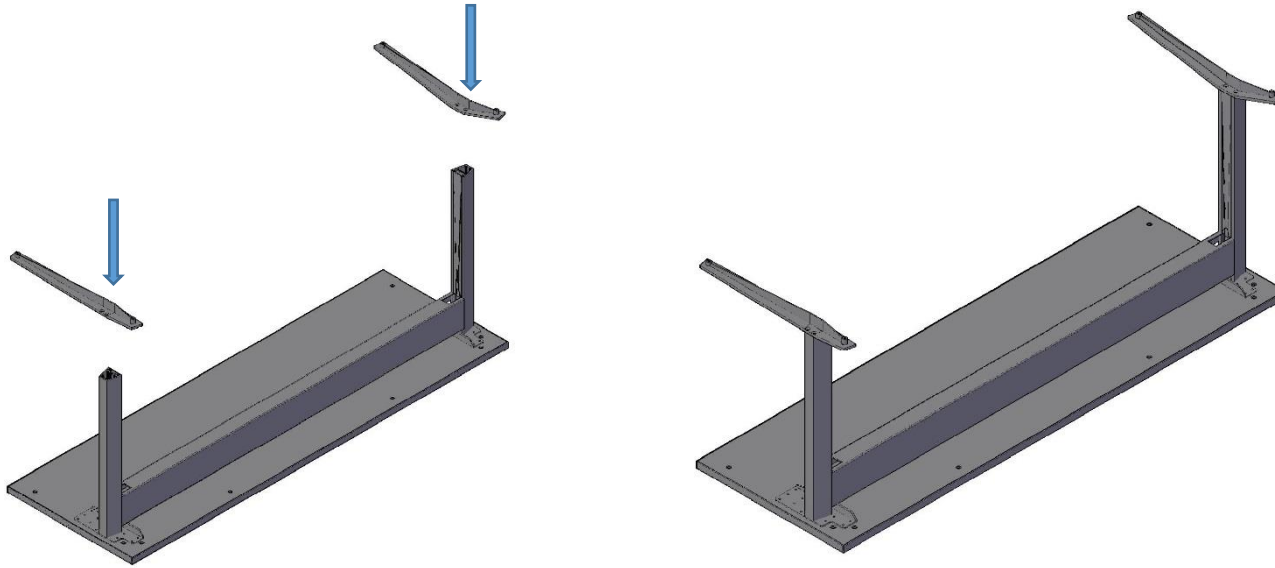


Step 2 : Next, Using the Qty (24) #12 x 1" Wood Screws, attach the Post and Trough assembly from Step 1 to the Work Surface.

Note: There are location holes to guide location.



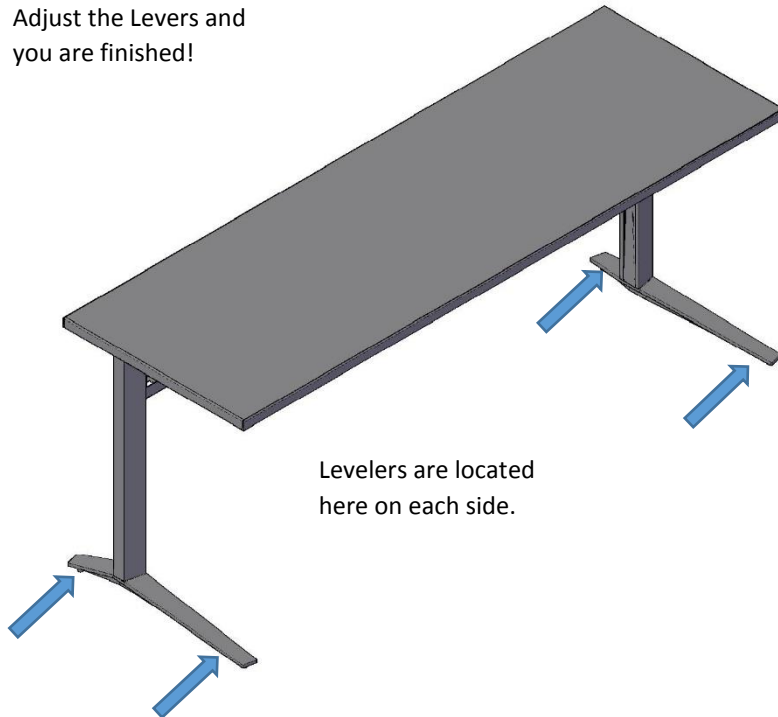
Step 3 : Using the 1/4"-20 x 3/4 Flat Head Cap Screws, attach the Feet to the Posts



Assembly Instruction

Step 4 : Finally, flip the table over and level it. You are finished!

Adjust the Levers and you are finished!



Note: The table comes equipped with removable wire management covers as shown below. If it is necessary to route wires down the leg, you may rotate the wire management cover so the notch is at the bottom in order for wires to exit.

