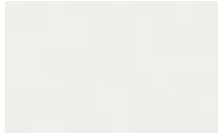


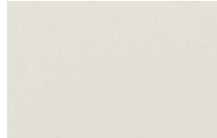
# Polka

## Surface Material Options

### Wood Finishes



Designer White (WH)



White Nebbia (WNB)



Beigewood (BW)\*



Sugar Maple (SM)



Oak Riftwood (ORW)\*



Kirsche (KHE)



Fawn Oak (FO)\*



River Cherry (RC)\*



Mesa Sunset (MAS)\*



Natural Marrone (NTM)\*



Studio Teak (TK)



Pinnacle Walnut (PNW)



Harvest Maple (HVM)\*



Golden Cherry (GC)



Legacy Walnut (LW)



Artisan Walnut (AW)



Shaker Cherry (SKC)



Select Cherry (SCH)



Williamsburg Cherry (WC)



Harvest Walnut (HW)



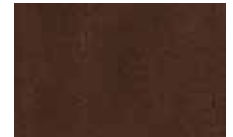
Dark Cherry (DC)



Mahogany Walnut (MW)



Henna Walnut (HNW)



Columbian Walnut (CO)



Sepia Walnut (SPW)\*



Florence Walnut (FLW)\*



Dark Forest Walnut (DFW)\*



Espresso (EW/EF)



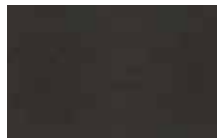
Portico Teak (PTK)\*



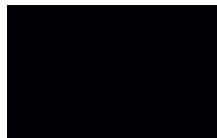
Weathered Ash (WTA)\*



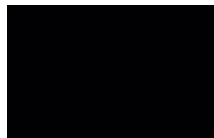
Smoky Brown Pear (SBP)\*



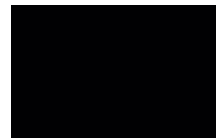
Asian Night (AS)



Midnight Run (MNR)



Metropolis Sky (MTS)



Black (BL)

\*Finish is Low Sheen

Colors represented are high-resolution reproductions and may vary slightly from the actual product. To order samples, please contact our Customer Service team or order online at [www.indianafurniture.com](http://www.indianafurniture.com). Graining and finish colors may vary, yet will continue to complement, across Veneer, HPL, TFL, and Seating products due to the inherent differences of these materials.