



catalyst

INDIANA FURNITURE

If you were to look up the definition of catalyst you would find that Merriam-Webster defines it as: a substance that enables a reaction to proceed at a usually faster rate or under different conditions than otherwise possible; an agent that provokes or speeds significant change or action.

Indiana Furniture is just that. A catalyst. A change agent to make it easier to bring spaces—that meet your needs, that flex with your workers, that encompass your vision—to life. And this year we're showcasing not only our latest additions, but also how a smart integration of products can lead to functional design for today's evolving spaces.

## A CATALYST FOR...

FLEXIBILITY	04
BUSINESS	08
VERSATILITY	12
HARMONY	16
COMFORT	20
DESIGN	24
SENSIBILITY	28

# A CATALYST FOR FLEXIBILITY

The old formula of the cubicle-laden office has been replaced by unique spaces that accommodate different types of working. The office has become an extension of how we live and there is no longer a one-size-fits-all approach.

Moving forward, hybrid working will become a mainstream practice, giving employees more choice in when and where to work. It will be key for companies to balance individual and organizational needs, enticing workers to engage at the office and feel productive within the available spaces. These types of spaces need to evolve to accommodate the new styles of working and this can be done through supportive furniture, accessories, and readily available technology.

Now more than ever spaces need to flex between collaborative or group work and focused or individual work. And these areas have become more relaxed—inspired by home settings—to give employees comfort while collaborating, touching down, or simply working on their own. They allow users to work how they want all in the same space.

The key is to select products that easily integrate together to form the productive space you need and that also provide you with the flexibility to transform as needs change.

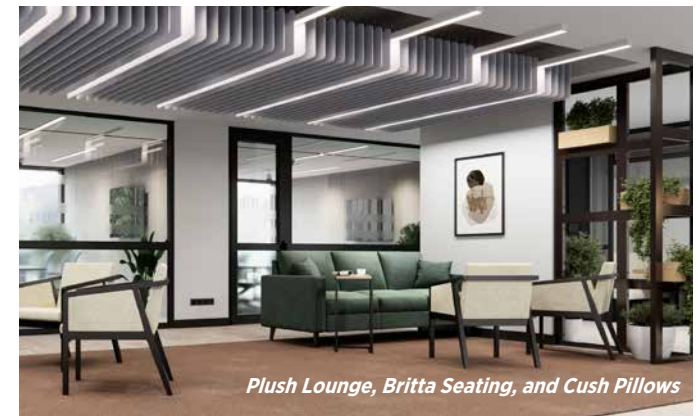


*KickStart Lounge with Jot Tables, KickStart Pouffes, and Cush Pillows*





*KickStart Lounge with Jot Tables, KickStart Pouffes, Iconic Storage, and Cush Pillows*



*Plush Lounge, Britta Seating, and Cush Pillows*



*Natta, Fifteen Lounge, and Spirit*

From Canvas to Plush, KickStart to One10, Natta to Fifteen, and Square One to Jot, Indiana Furniture develops each series to not only work alone, but to effectively complement others for a complete solution to the ever-changing needs of the workplace.



# A CATALYST FOR BUSINESS

Today's spaces have the need for tables that allow for people to collaborate, brainstorm, discuss, share, present, and, ultimately, continue driving business.

Indiana Furniture's new Catalyst Tables blend desired aesthetics, functionality, and technology to deliver a comprehensive solution for all types of meeting needs and spaces.

The line boasts a broad selection of veneers, laminates, and glass, a variety of top shapes, a vast range of sizes spanning from 30"D to 60"D and 30"W to 240"W, integrated power/data, and a variety of heights, including work, counter, and bar. However, the real beauty is in the mix of veneer, laminate, and metal base options. The veneer and laminate bases feature a built-in trough, smart wire management, and accent elements to enhance the overall style. The design versatility feels nearly endless.

But it doesn't stop there. An assortment of storage and accessory units, like buffets, integrated waste bins, lecterns, and more, provide the ability to complete an entire space.

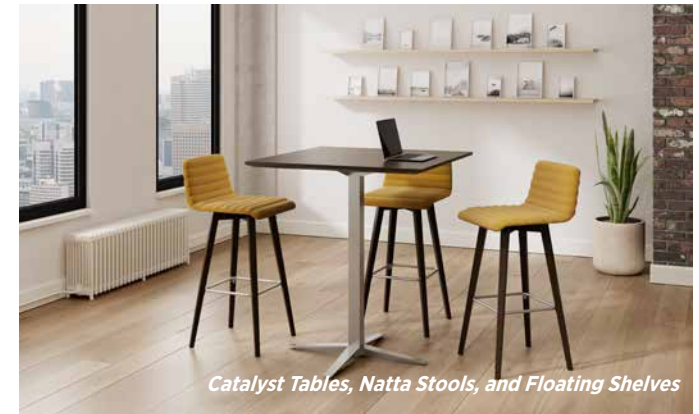


*Catalyst Tables with Clutch Seating*





*Catalyst Tables and Storage with Spirit Seating*



*Catalyst Tables, Natta Stools, and Floating Shelves*



*Catalyst Tables and Storage with Joy Seating*

Whether you're outfitting a breakroom, shared office, large board room, or executive office, Catalyst has the table solution for your space and style.

With so many options, this line will change how you think about incorporating tables in working environments.



# A CATALYST FOR VERSATILITY

Designed with minimalist lines and angles, the Strut Leg establishes modern versatility for any work environment. Originally launched into our portfolio as an option across casegoods and tables series, the popularity of the leg design has compelled us to make Strut its own line.

Introducing Strut Tables. Whether you're looking to outfit a small meeting space, café, board room, huddle spot, or private office, Strut accommodates all types of meeting and gathering spaces. And the stylish simplicity allows it to fluidly complement other furniture to create a seamless integration across environments.

Strut offers worksurface height tables in a variety of top shapes, including circular, square, rectangle, modern rectangle, and boat, across a broad range of sizes from 42"x42" to 60"x240", and everything in between. Select from a vast range of veneer finishes, laminates, and glass options, then add functionality through power/data ports and storage pieces. The legs, available in aluminum or black, feature integrated wire management to easily route power and data cables to the floor.



Strut Tables with Bailey Seating, Iconic Storage, and Magnetic Glass Marker Boards





*Strut Tables with Rockstar Roadie Seating, Me, Myself, and I with Jot Tables, and Iconic Storage*



*Strut Tables with Rockstar Headliner Seating*



*Strut Tables with Britta Seating*

Dress up a casual drop-in meeting room or add prestige to an executive suite. Strut Tables are designed with precision minimalist lines and angles to establish modern sensibility in any work area.

Effortlessly integrate power and data into tops then easily route cables from the top channel of the leg, where it connects to surfaces, all the way to the floor, giving you a clean and organized look.



# A CATALYST FOR HARMONY

The right task chair can make your day sing. That's where Rockstar comes in. Generous, contoured proportions and ergonomic adjustments harmonize with a diverse range of users to provide all-day comfort, and energizing support, to get the job done.

Rockstar was added to our portfolio several years back and features a sleek, yet shapely profile, a broad range of back, arm, base, and caster options, as well as weight-activated controls. But we wanted to take it a step further. The chair not only has been fine tuned to heighten the overall comfort, another back style has been added to expand upon usage and applications.

Welcome to the stage the new Rockstar Roadie and Rockstar Headliner task chairs. Rockstar Roadie brings you a slim design with big comfort, while Rockstar Headliner steals the show with an ultra-thick, sink-into-it design perfect for individual workspaces, meeting rooms, and more.

The one-of-a-kind comfort of Rockstar is sure to debut at the top of the charts.



*Rockstar Headliner Seating with Canvas/Gesso Height Adjustable Desk and Storage*





*Rockstar Headliner Seating with Iconic Casegoods*



*Rockstar Headliner Seating with Catalyst Tables and Storage*



*Rockstar Roadie Seating with Strut Tables*

Choose the optional button detailing on Rockstar Roadie high and mid-back chairs to incorporate an additional design element, available in pre-selected vinyl or a broad range of graded-in and contract upholstery.

Select the weight-activated control, which automatically adjusts to the user's weight, for a clean look (only one knob/paddle to work!) that supports users up to 325lbs.



# A CATALYST FOR COMFORT

When it comes to healthcare spaces, it's about more than providing a patient room, waiting area, or workstation, it's about creating a place where patients, families, and caregivers feel supported, at ease, so they can focus on overall health and well-being. It's about creating comfort.

Gleem+ does just that. This wood seating line ensures comfort, durability, and ease of cleaning to meet the demands of healthcare facilities. Designed for high traffic and multi-use areas, like patient rooms, caregiver spaces, community spaces, and administrative support areas, Gleem+ provides an array of high capacity and bariatric models to offer solutions for a diverse range of users up to 400 and 600lbs.

Choose from a variety of single seat, two- and three-seat tandem, bariatric, patient, and easy access models to configure the perfect space. Pair with ganging and freestanding tables in your choice of veneer, HPL, or TFL tops to complete your look. Add optional arm caps to protect the finish and extend the look and function.



*Gleem+ Tandem Seating and Ganging Tables*





*Gleem+ Patient Chair with Canvas/Gesso Studio Pedestal*



*Gleem+ Tandem Seating and Ganging Tables*



*Gleem+ Hip/Easy Access Seating*

With Gleem+ it's easy to provide comfort for a diverse range of users. Every model within the line fits users up to 400lbs while bariatric models accommodate users up to 600lbs.

And with a broad spectrum of graded-in and contract fabrics, vinyls, and leathers, it's effortless to create a seamless look across entire floors, wings, and facilities.



# A CATALYST FOR DESIGN

What makes one interior distinct from another is the clever curating of colors, textures, and styles to create something that expresses unique design and, in turn, a unique space. New additions to Indiana Furniture's surface materials offer on-trend options for these evolving, design-driven spaces.

Eight new laminates and four new veneer finishes, along with coordinating seating finishes, have joined the already vast program. The result is a holistic palette inspired by nature. A relevant light-to-dark spectrum that adds to the beauty of any environment and features low-emitting finish systems to meet indoor air quality standards which support sustainable initiatives in the workplace.

From the depth of the veneers and laminates to the enduring metal, stone, and patterned acrylics, our comprehensive program was thoughtfully selected to complement our entire portfolio of products, giving complete freedom to create a desired space.



*Catalyst Tables with Clutch Seating*



Eight new laminates and four new veneer finishes, along with coordinating seating finishes, have joined our already vast program. The result is a holistic palette inspired by nature. A relevant light-to-dark spectrum that adds to the beauty of any environment and features low-emitting finish systems to meet indoor air quality standards.

## NEW LAMINATES



White Nebbia (WNB)



Kirsche (KHE)



River Cherry (RC)



Natural Marrone (NTM)



Portico Teak (PTK)



Sepia Walnut (SPW)



Florence Walnut (FLW)



Midnight Run (MNR)

## NEW FINISHES



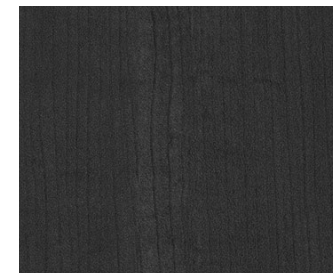
Mesa Sunset (MAS)



Pinnacle Walnut (PNW)



Henna Walnut (HNW)



Metropolis Sky (MTS)

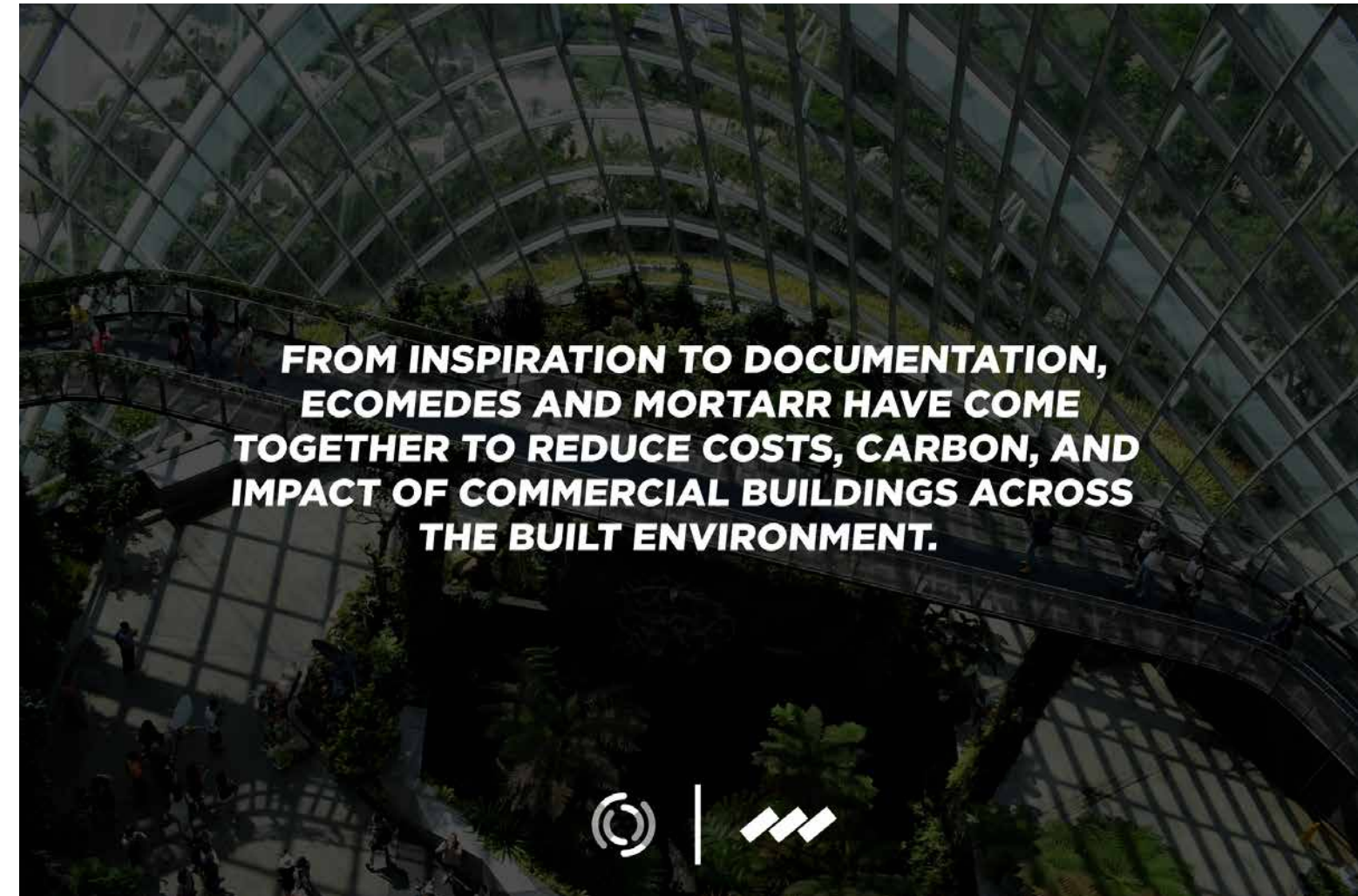


# A CATALYST FOR SENSIBILITY

Since 1905, Indiana Furniture has proven its commitment to a sustainable future by supporting the standards and programs that protect the natural world and human health. Whether it's local sourcing, domestic manufacturing, reducing contaminants, diverting waste, implementing wellness programs, or supporting community endeavors, social responsibility is a part of every decision at Indiana Furniture.

And now we've partnered with ecomedes + Mortarr to streamline the selection of sustainable products for tens of thousands of A+D professionals, building owners, developers, CREs, specifiers, procurement teams, and others.

ecomedes provides a solution to save time and money while catapulting environmental, social, and governance compliance. Mortarr is a search and discovery engine custom-built for commercial construction and design professionals. Together the platforms digitally connect professionals with products and services, like Indiana Furniture, across all industry sectors and verticals to drive sustainable practices.







*Square One, Catalyst, KickStart, and Bailey*



*Gleem and Canvas*

**100%** of all product series are BIFMA level® certified, BIFMA Compliant® certified, TSCA Title VI/Carb Compliant, Intertek Environmental certified, and contribute to the LEED® program. Plus, 100% of our casegoods and tables lines have our UV topcoat finish, UVAdvantage.

**5/5** perfect score for the UVAdvantage finish in independent testing for durability, and the topcoat process is sustainable, with reduced air pollutants and a system to recapture and reuse excess finish.



# Indiana

FURNITURE



[www.IndianaFurniture.com](http://www.IndianaFurniture.com)