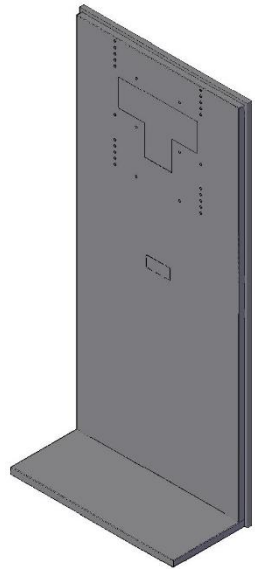
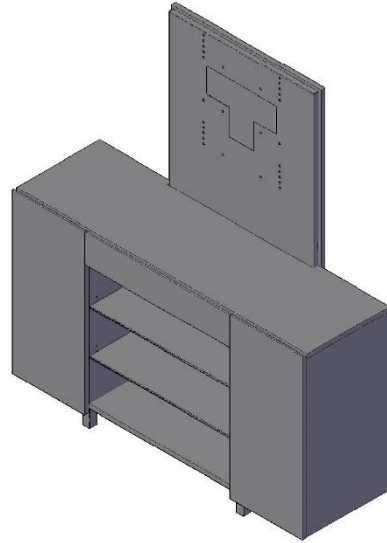


## One 10: Flat Panel Monitor Stand



Flat Panel Monitor Stand



Flat Panel Monitor Stand With Credenza

### Tools Required

- (2) People
- Drill with phillips screw bit
- 5/32" Allen Wrench
- Level

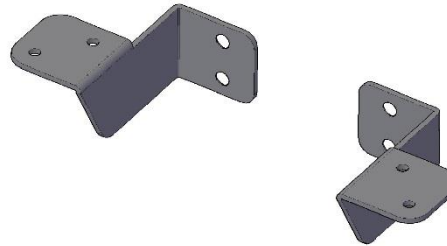
### Hardware Included

- #8 X 5/8" Pand Head Screws
- #5/32 Allen Wrench

### Parts List:

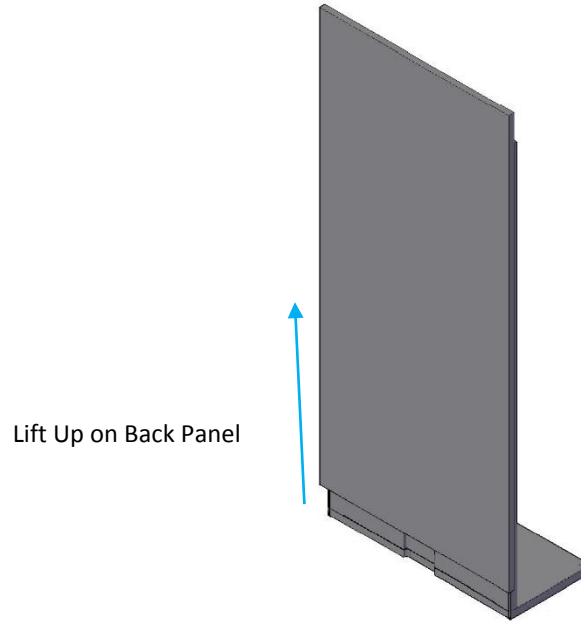


Qty (1) Flat Panel Monitor Stand

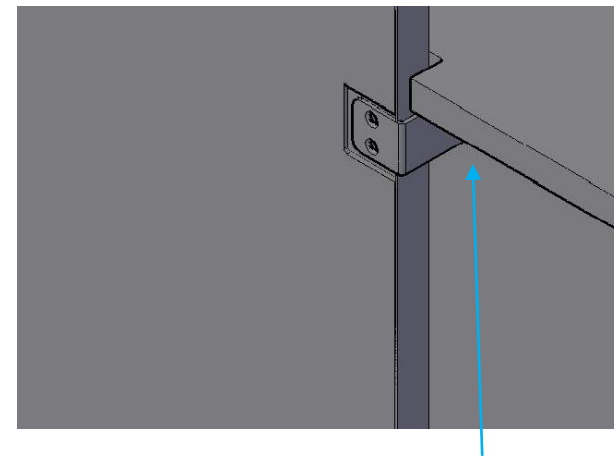
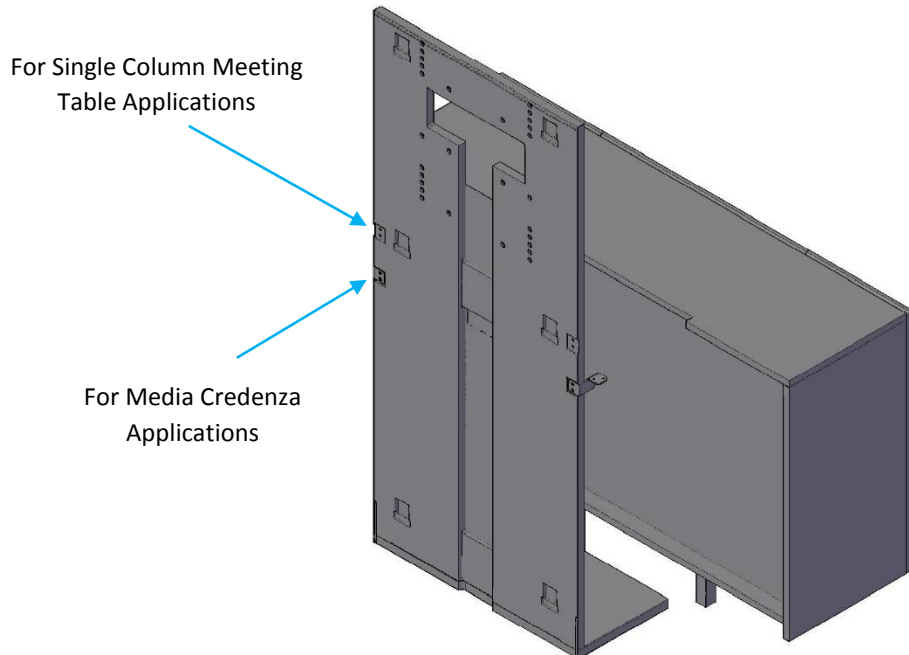


Qty (2) Mounting Brackets *(Note: The Brackets are Left Hand and Right Hand)*

**Step 1:** Remove the back panel by lifting up on it.



**Step2 :** With the back panel removed attach the mounting brackets using the 1" X ¼-20 Bolts and the 5/32" Allen Wrench. The upper cut out is used in Single Column Meeting Table Applications, and the lower cut outs are used for Footed Media Credenza applications. When the Brackets are attached to the Monitor Stand, slide the unit to the corresponding product, in this case we are using a Media Credenza. Then screw the mounting brackets to the adjoining unit with the #8 X 5/8" Screws



**Step 3:** Now, install the Television (**Attachment Hardware Not Included**) and slide the back panel back on from **Step 1**

Slide Back Panel Down on Z-Clips

