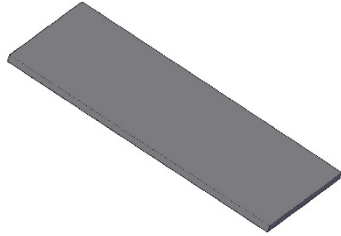
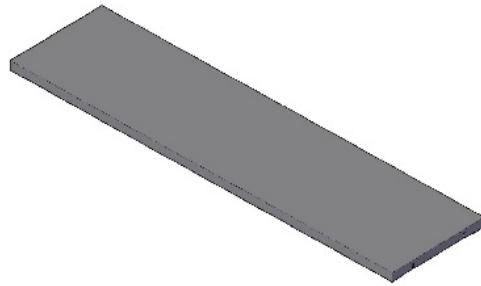


## One 10 Block: 4 Piece Conference Table Assembly Instructions 96" to 120" Lengths

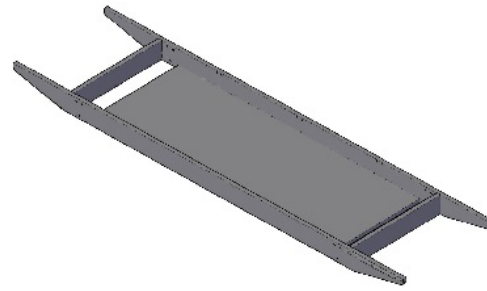
### Parts List:



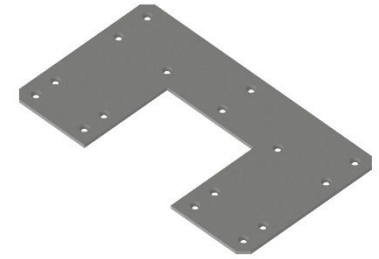
Qty (2) Short Tops



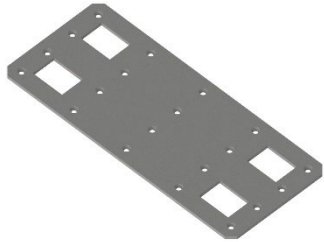
Qty (2) Long Tops



Qty (1) Trough Assembly



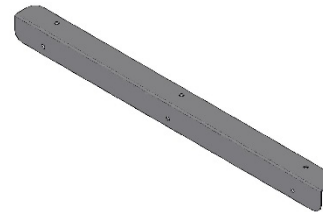
Qty (2) Jointer Plates



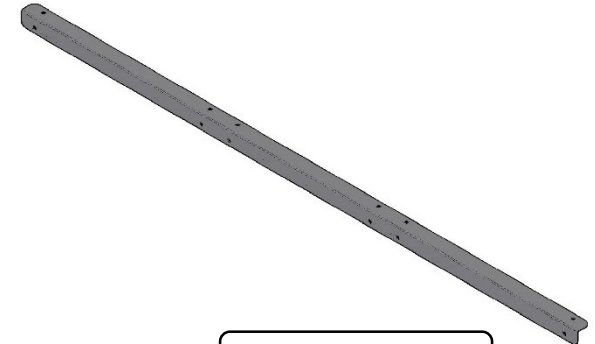
Qty (4) Jointer Plates



Qty (8) Jointer Bolts



Short L-Brackets



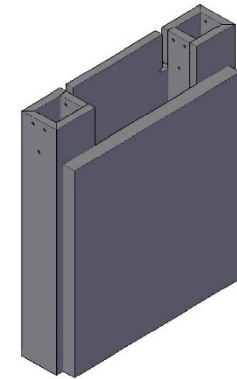
Long L-Brackets

### Hardware Included

- Bag of #10 x 3/4" Pan Head Screws
- Bag of 1/4"-20 x 2-3/8" Bolt and 1/4"-20 Nuts
- (12) Cover Caps (Optional)

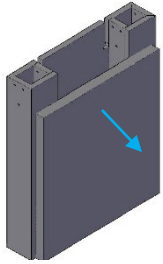
### Tools Required

- (2) People
- Drill with phillips screw bit
- 10mm Wrench
- 5/32" Allen Wrench
- 5mm Allen Wrench
- Level

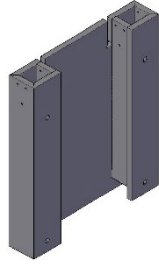


Qty (2) Bases

**Step 1:** Remove the accent cover off of the bases by removing the thumb screw and pulling it off. Then bolt together the (2) Bases to the Trough assembly using the 1/4"-20 x 2-3/8" Bolt and 1/4"-20 Nuts. Next screw on the Short L-Brackets and the Long L-Brackets using the #10 x 3/4" Pan Head Screws evenly spaced. If the table is 48" wide, using the provided Cover Caps, cover the outside holes on the base.

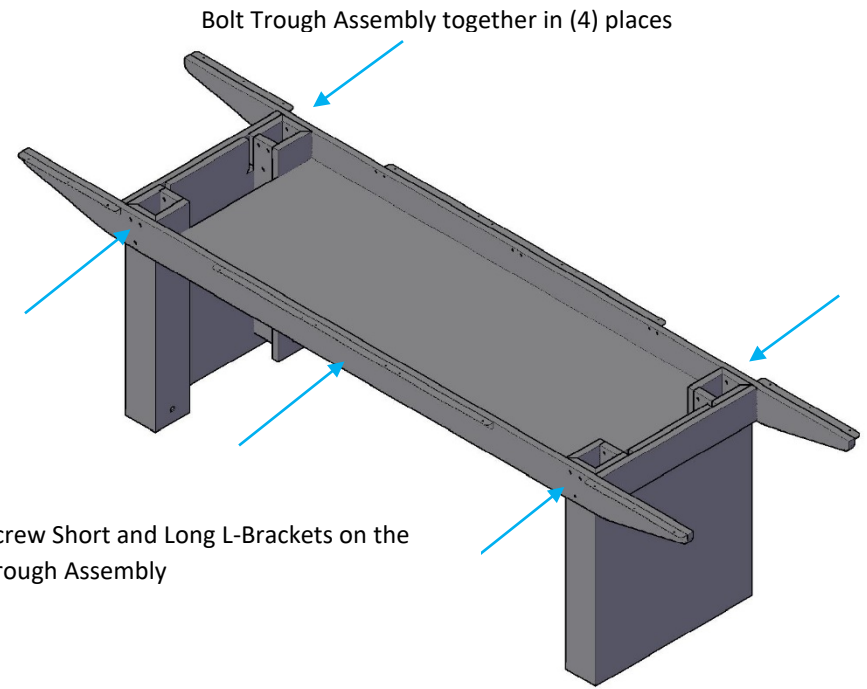
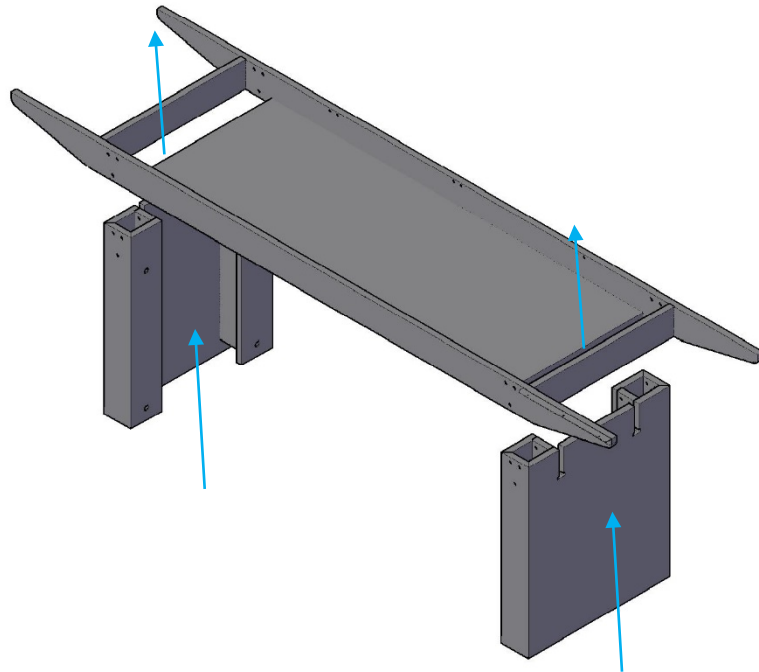
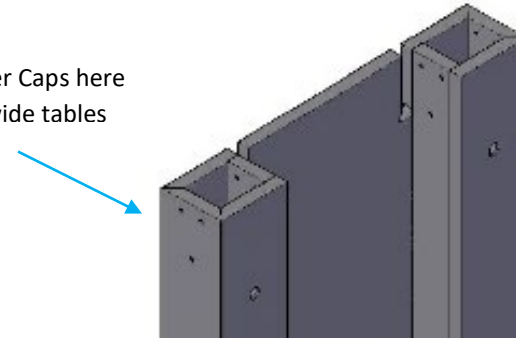


Base With Accent Cover



Base With Accent Cover Removed

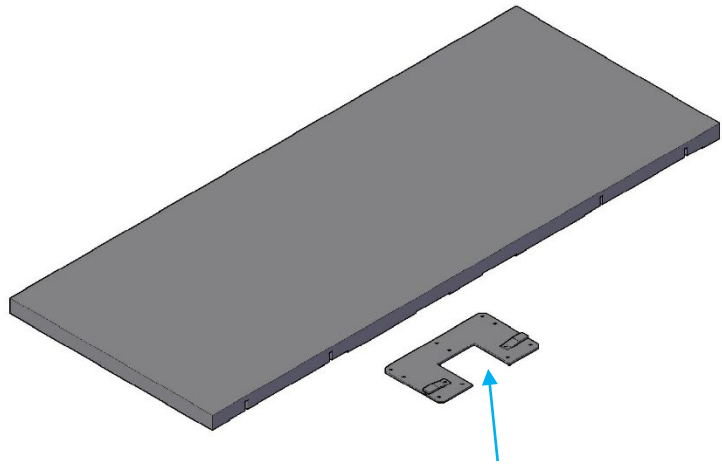
Place Cover Caps here  
on 48" wide tables



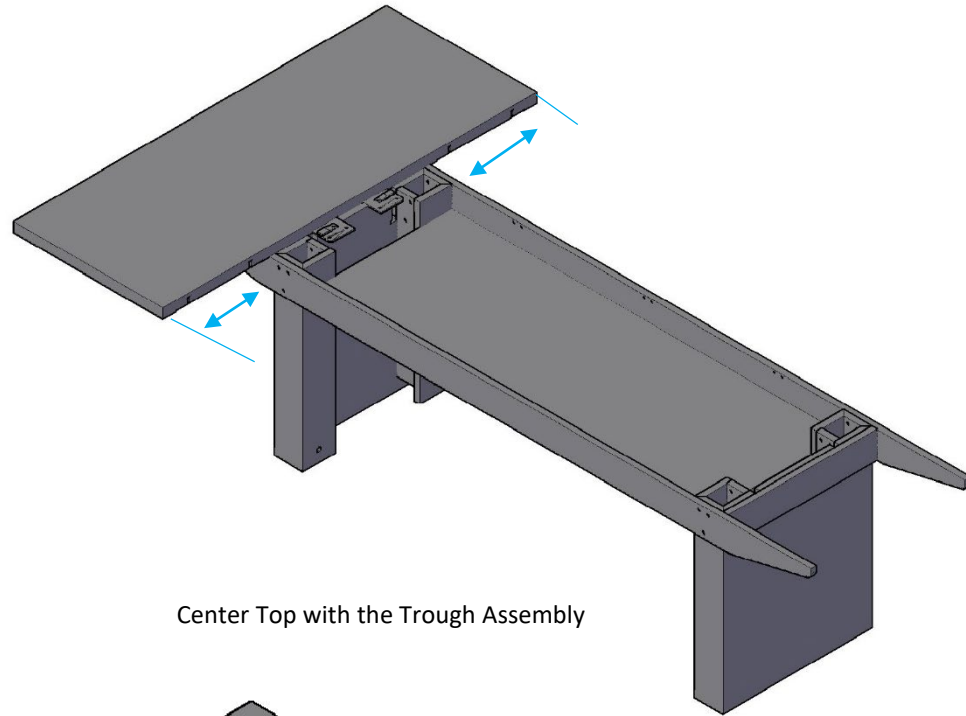
Bolt Trough Assembly together in (4) places

Screw Short and Long L-Brackets on the  
Trough Assembly

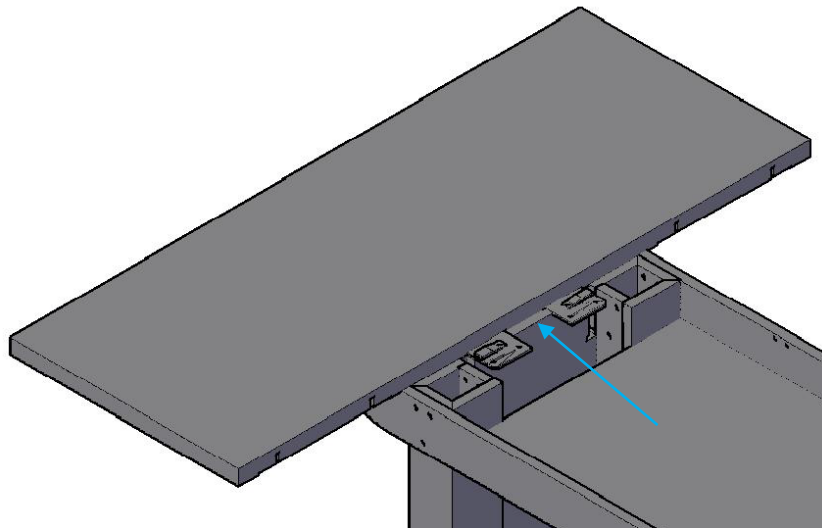
**Step 2:** Attach (1) U-Jointer Plate to the bottom of (1) Short Top. Place one Short Top on the end of the Trough Assembly and fasten it to the L-Brackets using #6 x 1/2" Pan Head Screws. Center the Top from left to right and align the Top flush with the outside of the base.



Attach Jointer Plate

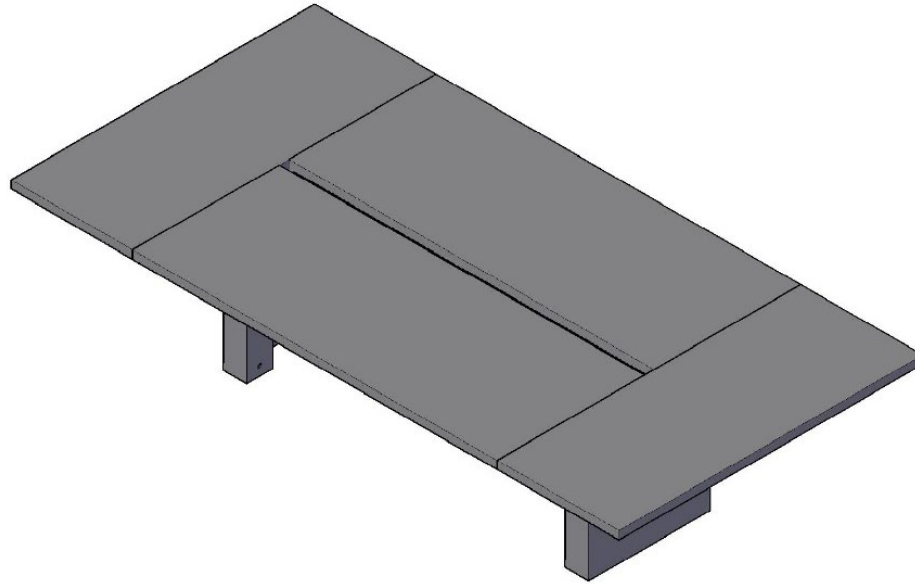


Center Top with the Trough Assembly

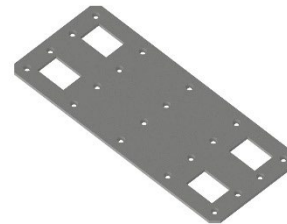


Make Top Flush with the outside of the base as shown.

**Step 3:** While keeping the outside and top surfaces flush, connect the remaining tops using the 10mm wrench and the provided Joints Bolts. Now, fasten the tops to the L-Brackets with the #10 x 3/4" Pan Head Screws. Next fasten the Joints Plates to the Tops using #10 x 3/4" Pan Head Screws.

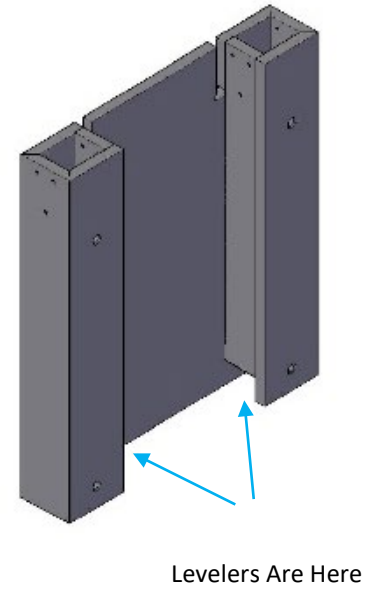
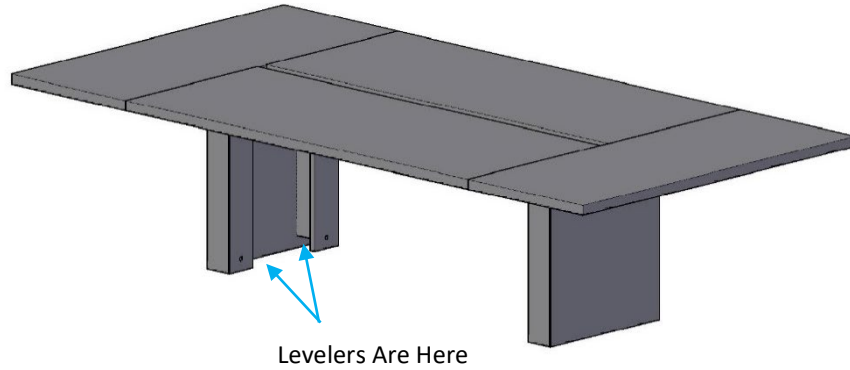


Place Joint Bolts in 1<sup>st</sup> then Fasten the Joints Plates



Jointer Plate

**Step 4: Level the table using the 5mm Allen Wrench**



**Step 5: Push on the Base Accent Panels and insert thumb screws from Step 1**

