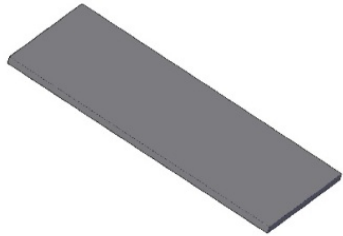
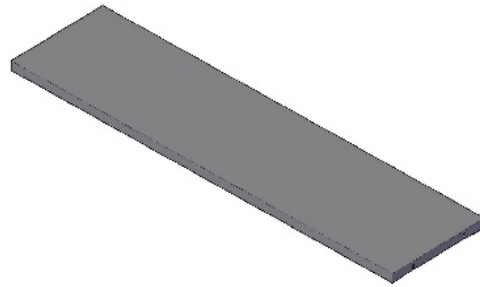


## One 10 Block: 4 Piece Conference Table Assembly Instructions 144" to 192" Lengths

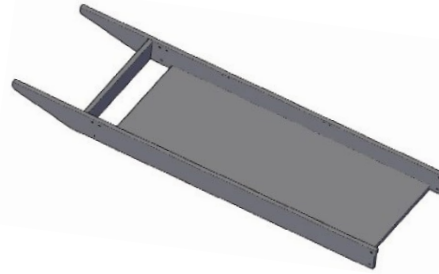
### Parts List:



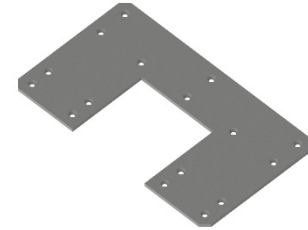
Qty (3) Short Tops



Qty (4) Long Tops



Qty (2) Trough Assembly



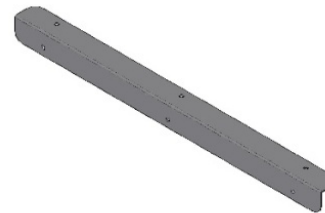
Qty (4) Jointer Plates



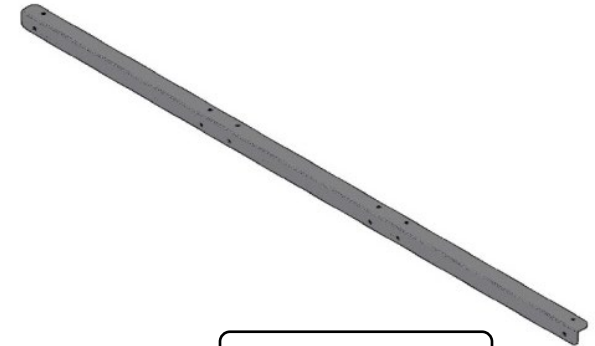
Qty (8) Jointer Plates



Qty (8) Jointer Bolts



Short L-Brackets



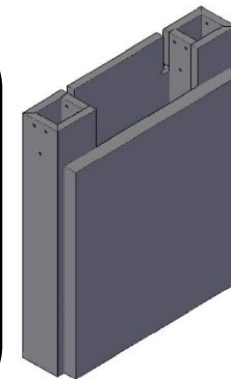
Long L-Brackets

### Hardware Included

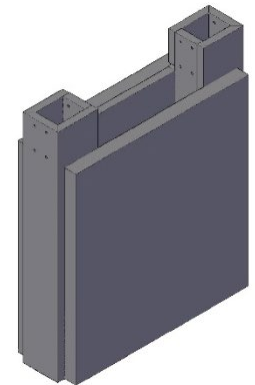
- Bag of #10 x 3/4" Pan Head Screws
- Bag of 1/4"-20 x 2-3/8" Bolt and 1/4"-20 Nuts
- (18) Cover Caps (Optional)

### Tools Required

- (2) People
- Drill with phillips screw bit
- 5/32" Allen Wrench
- 5mm Allen Wrench
- 10mm Wrench
- Level

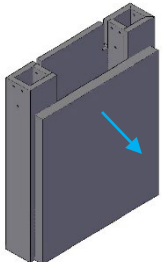


Qty (2) Bases

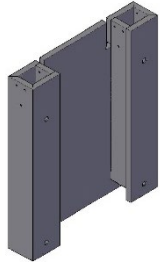


Qty (1) Mid Leg

**Step 1:** Remove the accent cover off of the bases by removing the thumb screw and pulling it off. Then bolt together (1) Base and (1) Mid Leg to (1) Trough assembly using the 1/4"-20 x 2-3/8" Bolt and 1/4"-20 Nuts. Next, Bolt the remaining Trough Assembly to the remaining Base. Next screw on the Short L-Brackets and the Long L-Brackets using the #10 x 3/4" Pan Head Screws evenly spaced. If the table is 48" wide, using the provided Cover Caps, cover the outside holes on the base

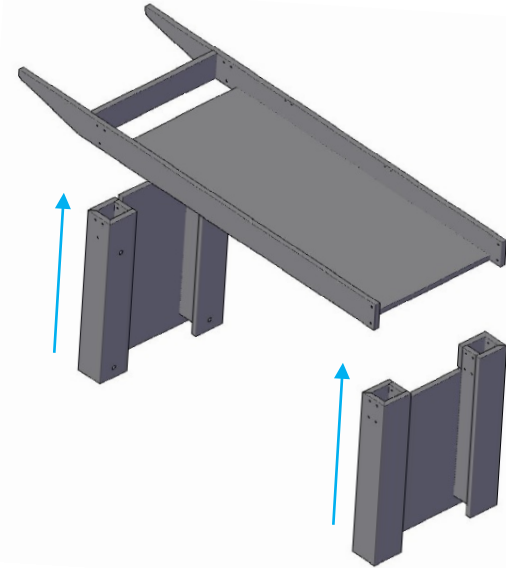
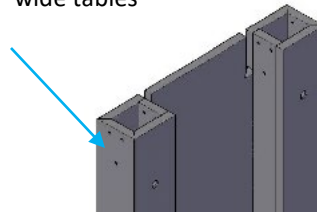


Base With Accent Cover

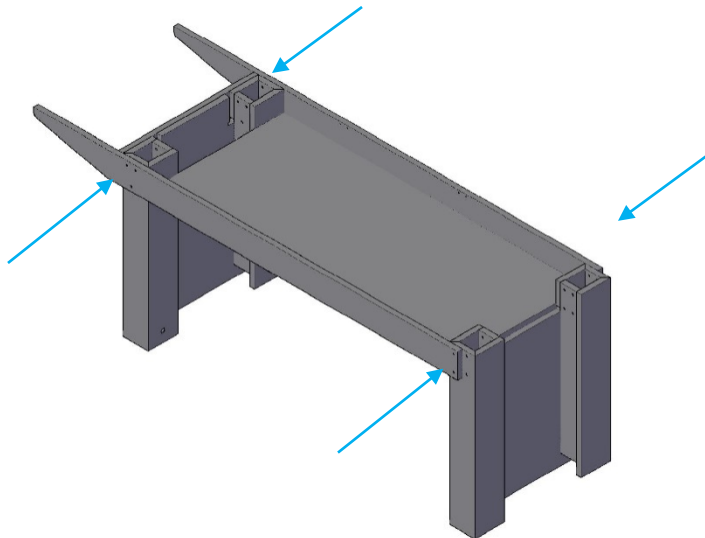


Base With Accent Cover Removed

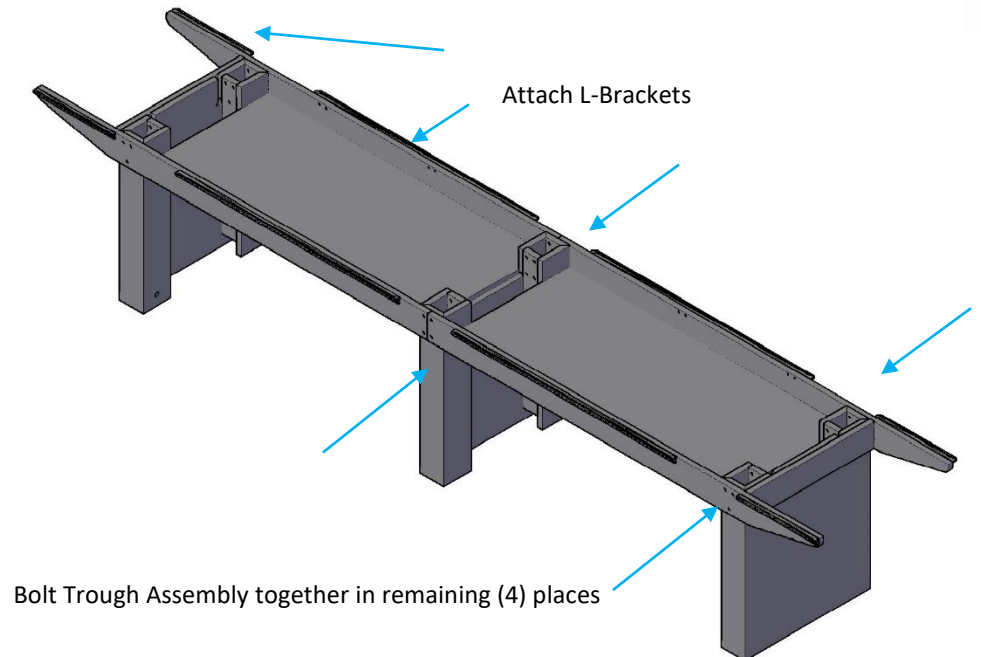
Place Cover Caps here  
on 48" wide tables



Bolt Trough Assembly together in (4) places

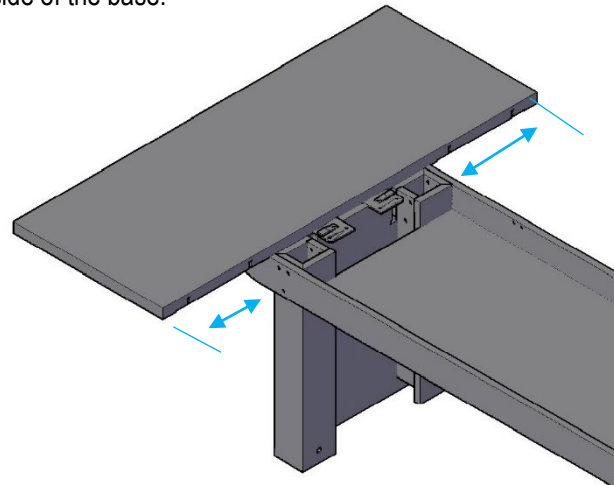
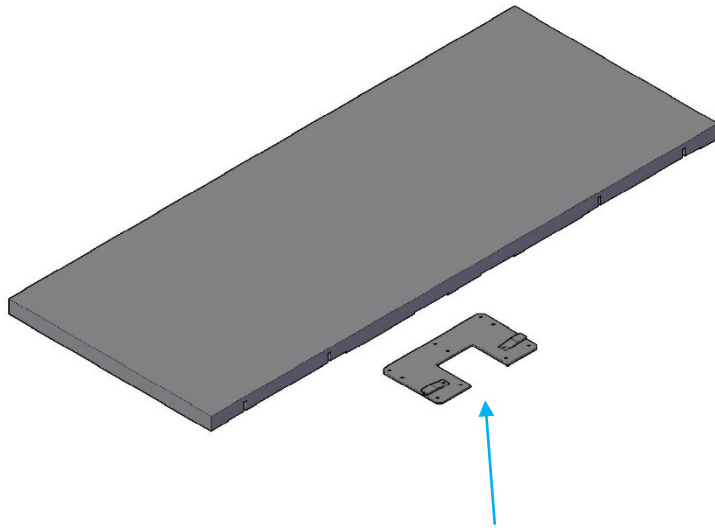


Attach L-Brackets

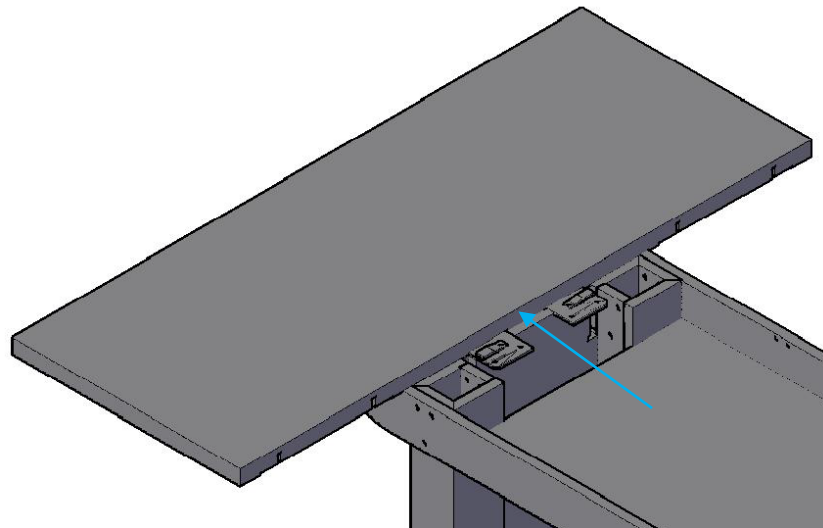


Bolt Trough Assembly together in remaining (4) places

**Step 2:** Attach (1) U-Jointer Plate to the bottom of (1) Short Top. Place one Short Top on the end of the Trough Assembly and fasten it to the L-Brackets using #10 x 3/4" Pan Head Screws. Center the Top from left to right and align the Top flush with the outside of the base.

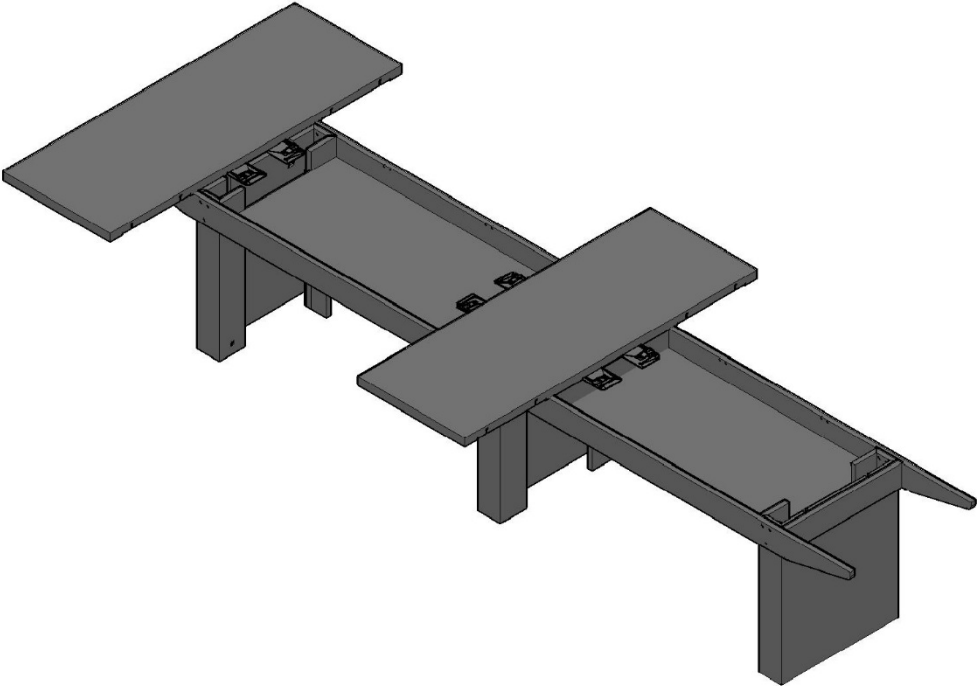


Center Top with the Trough Assembly

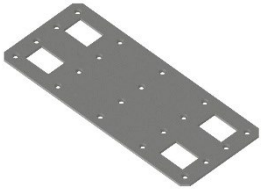


Make Top Flush with the outside of the base as shown.

**Step 3:** Attach (2) U-Jointer Plates to the bottom of (1) Short Top. Place one Short Top in middle of the Trough Assembly. Next place (1) long top in between the (2 short tops and fasten with the Jointer bolts. Repeat step with a long top on the opposite side.

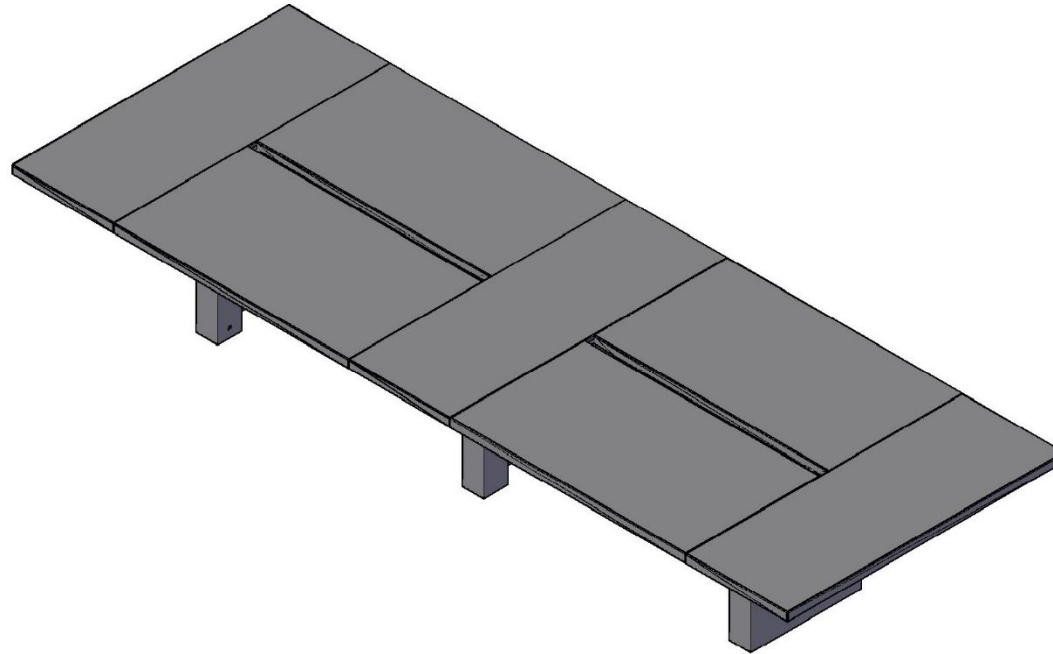


Fasten Jointer Bolts 1<sup>st</sup>

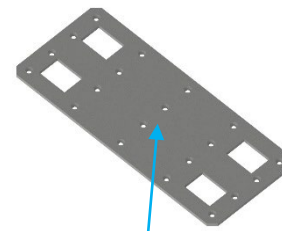


Jointer Plate

**Step 3:** While keeping the outside and top surfaces flush, connect the remaining tops using the 10mm wrench and the provided Joints Bolts. Now, fasten the tops to the L-Brackets with the #10 x 3/4" Pan Head Screws. Next fasten the Joints Plates to the Tops using #10 x 3/4" Pan Head Screws. **Note: The U-Jointer Plate may be fastened using the clearance holes in the trough.**

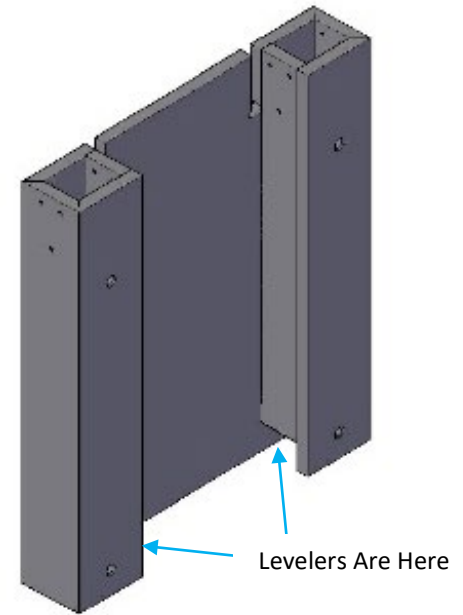
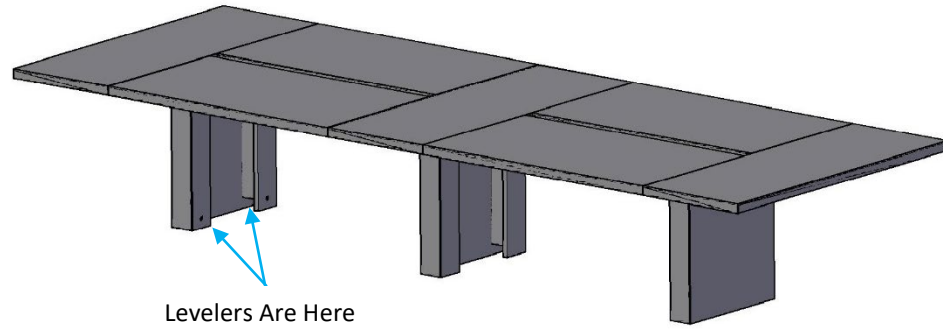


Place Jointer Bolts in 1<sup>st</sup> then Fasten the Jointer Plates



Jointer Plate

**Step 4:** Level the table using the 5mm Allen Wrench



**Step 5:** Push on the Base Accent Panels and insert thumb screws from Step 1

