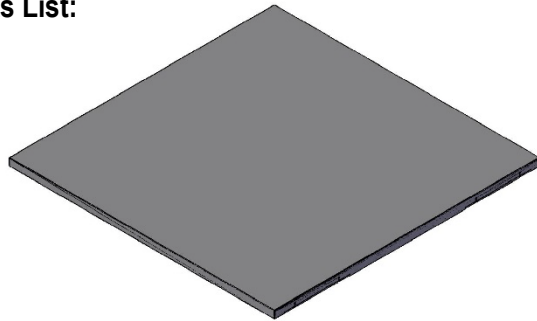
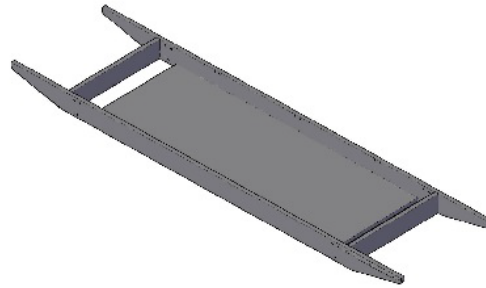


One 10: Standard Top Conference Table Assembly Instructions 96" to 120" Lengths

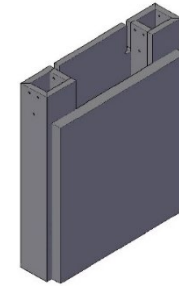
Parts List:



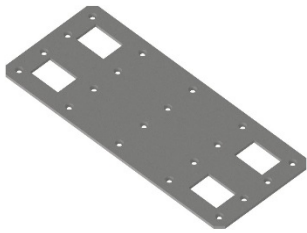
Qty (2) Tops



Qty (1) Trough Assembly



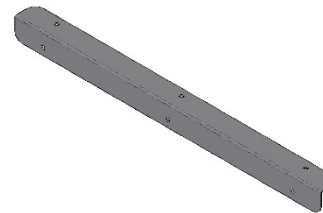
Qty (2) Bases



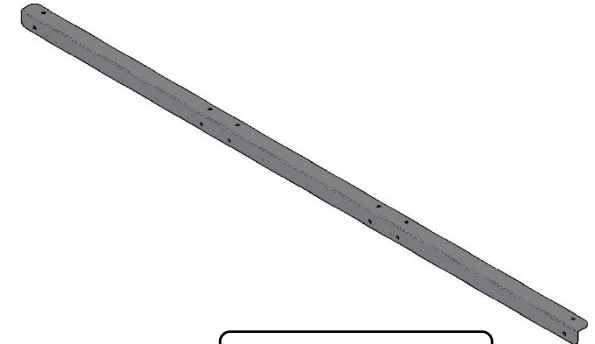
Qty (2) Jointer Plates



Qty (4) Jointer Bolts



Short L-Brackets



Long L-Brackets

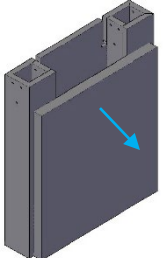
Hardware Included

- Bag of #10 x 3/4" Pan Head Screws
- Bag of 1/4"-20 x 2 3/8" Bolt and 1/4"-20 Nuts
- (12) Cover Caps (Optional)

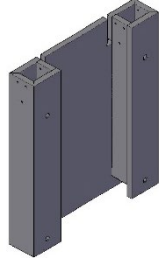
Tools Required

- (2) People
- Drill with phillips screw bit
- 5/32" Allen Wrench
- 5mm Allen Wrench
- 10mm Wrench
- Level

Step 1: Remove the accent cover off of the bases by removing the thumb screws and pulling it off. Then bolt together the (2) Bases to the Trough assembly using the 1/4"-20 x 2-3/8" Bolt and 1/4"-20 Nuts. Next screw on the Short L-Brackets and the Long L-Brackets using the #10 x 3/4" Pan Head Screws Spacing evenly. If the table is 48" wide, using the provided Cover Caps, cover the outside holes on the base

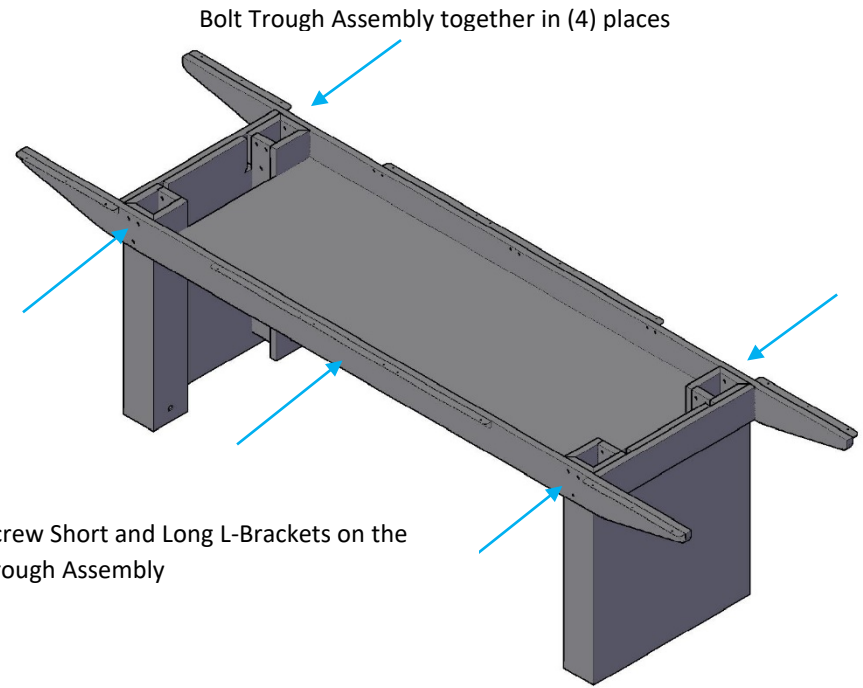
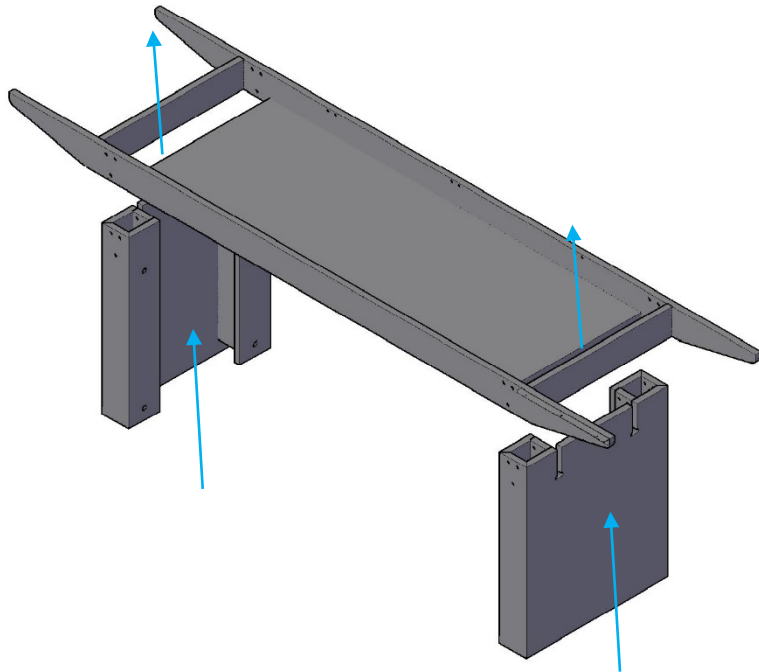
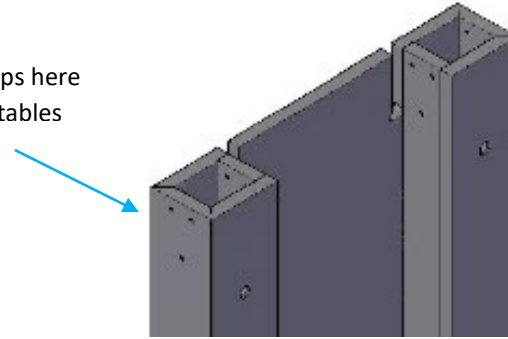


Base With Accent Cover



Base With Accent Cover Removed

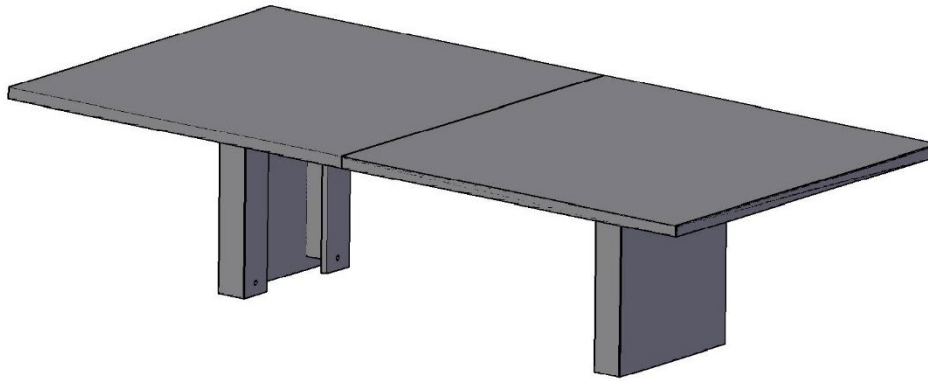
Place Cover Caps here
on 48" wide tables



Bolt Trough Assembly together in (4) places

Screw Short and Long L-Brackets on the
Trough Assembly

Step 2: While keeping the outside and top surfaces flush, connect the remaining top using the 10mm wrench and the provided Joints Bolts. Be sure to center the Tops to the width and the length of the trough assembly. Now, fasten the tops to the L-Brackets with the #10 x 3/4" Pan Head Screws. Next fasten the Joints Plates to the Tops using #10 x 3/4" Pan Head Screws.



Center Top with the Width of the Trough Assembly

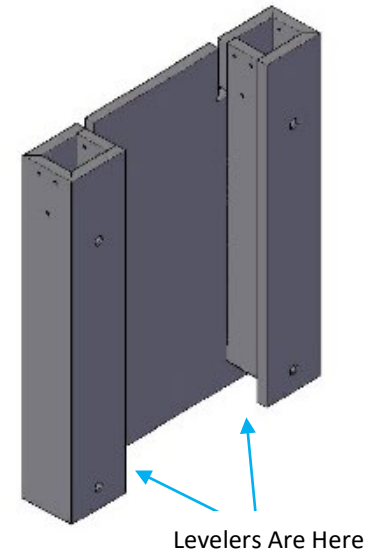
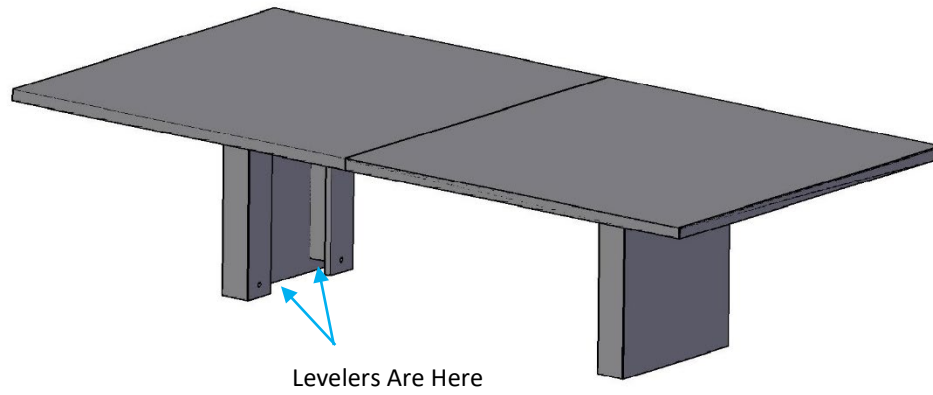


Place Joints Bolts in 1st then Fasten the Joints Plates



Jointer Plate

Step 3: Next, level the table using the 5mm Allen wrench.



Step 4: Push on Base Accent Panels and insert Thumb Screw from Step 1

