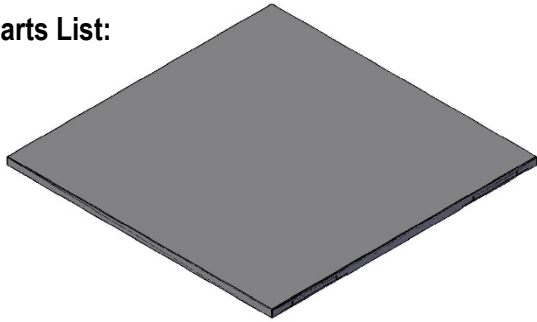
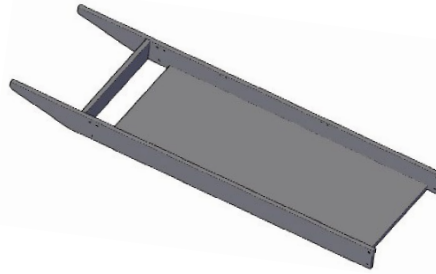


## One 10 Block: Standard Top Conference Table Assembly Instructions 144" to 192" Lengths

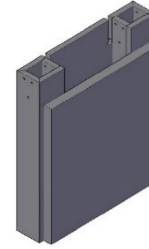
### Parts List:



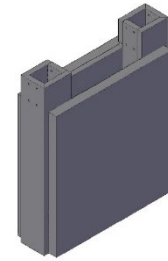
Qty (2) Tops



Qty (2) Trough Assembly



Qty (2) Bases



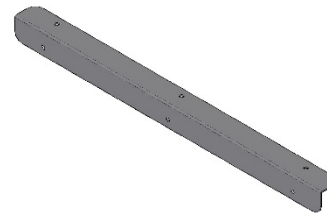
Qty (1) Mid Leg



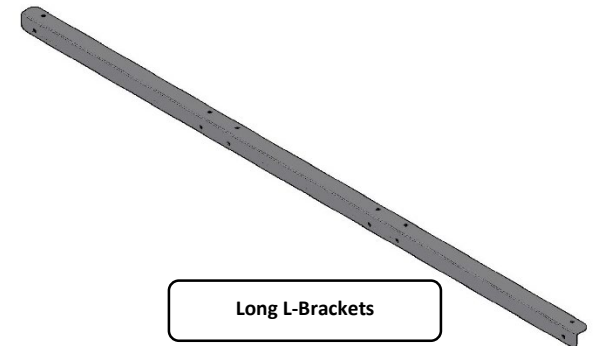
Qty (2) Jointer Plates



Qty (4) Jointer Bolts



Short L-Brackets



Long L-Brackets

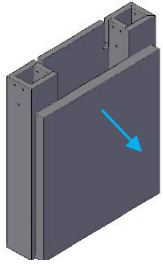
### Hardware Included

- Bag of #10 x 3/4" Pan Head Screws
- Bag of 1/4"-20 x 2-3/8" Bolt and 1/4"-20 Nuts
- (18) Cover Caps

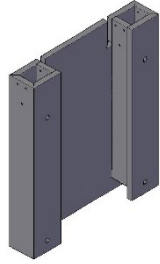
### Tools Required

- (2) People
- Drill with phillips screw bit
- 5/32" Allen Wrench
- 5mm Allen Wrench
- 10mm Wrench
- Level

**Step 1:** Remove the accent cover off of the bases by removing the thumb screws and pulling it off. Then bolt together (1) Base and (1) Mid Leg to (1) Trough assembly using the 1/4"-20 x 2-3/8" Bolt and 1/4"-20 Nuts. Next, Bolt the remaining Trough Assembly to the remaining Base. Next screw on the Short L-Brackets and the Long L-Brackets using the #10 x 3/4" Pan Head Screws spacing evenly. If the table is 48" wide, using the provided Cover Caps, cover the outside holes on the base.

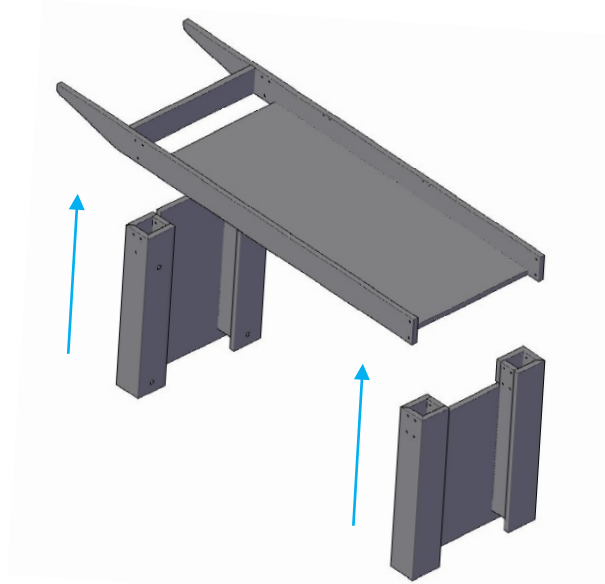
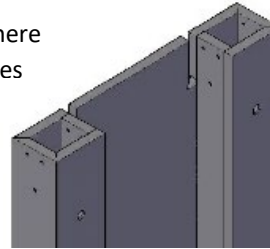


Base With Accent Cover

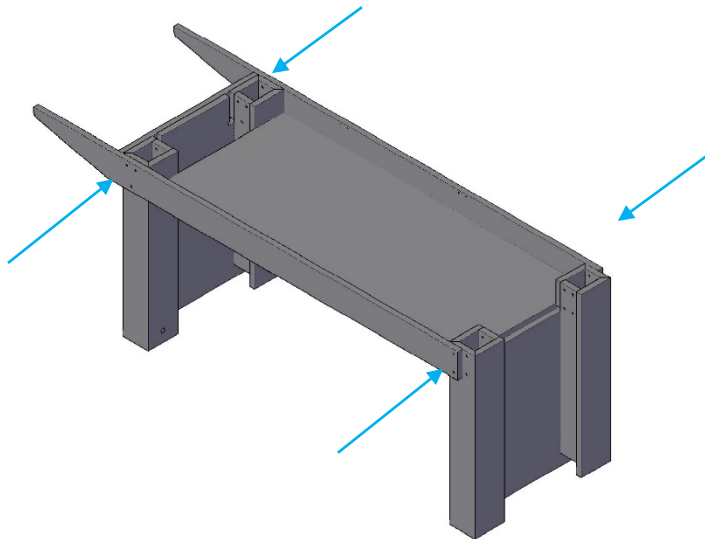


Base With Accent Cover Removed

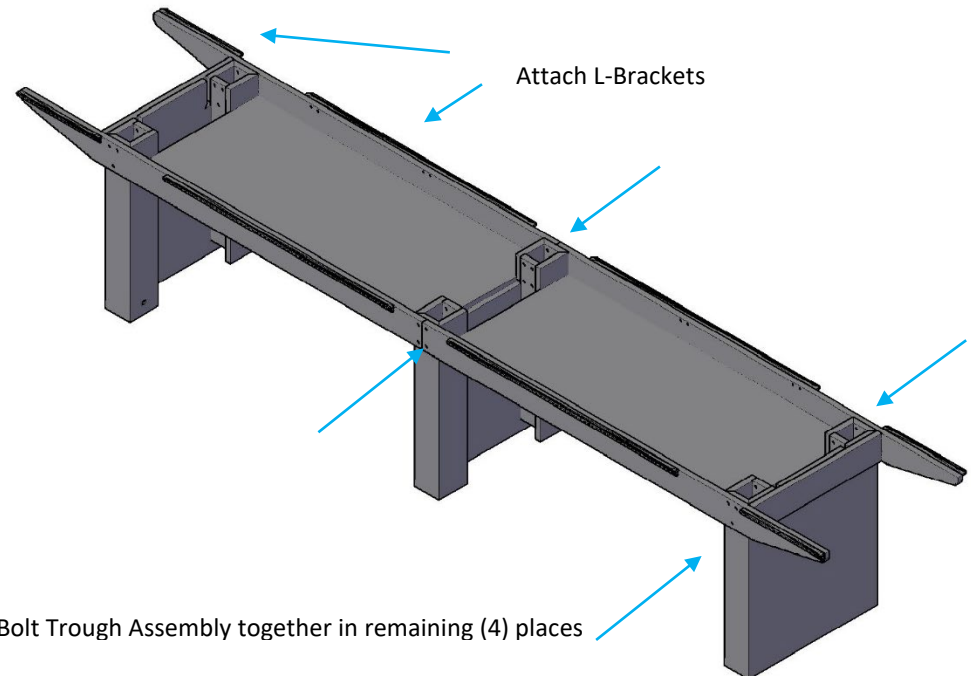
Place Cover Caps here  
on 48" wide tables



Bolt Trough Assembly together in (4) places

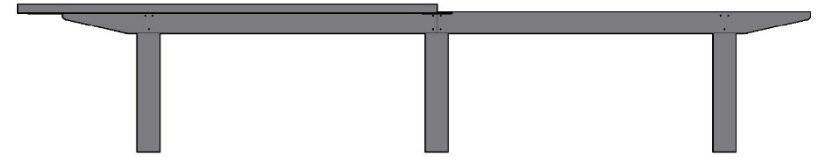
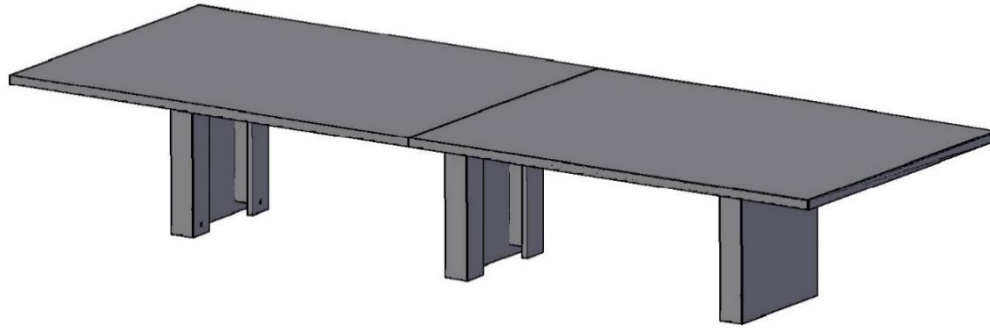


Attach L-Brackets



Bolt Trough Assembly together in remaining (4) places

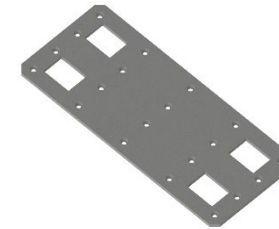
**Step 2:** While keeping the outside and top surfaces flush, connect the remaining top using the 10mm wrench and the provided Joints Bolts. Be sure to center the Tops to the width and the length of the trough assembly. Now, fasten the tops to the L-Brackets with the #10 x 3/4" Pan Head Screws. Next fasten the Joints Plates to the Tops using #10 x 3/4" Pan Head Screws.



Center Top with the Width of the Trough Assembly

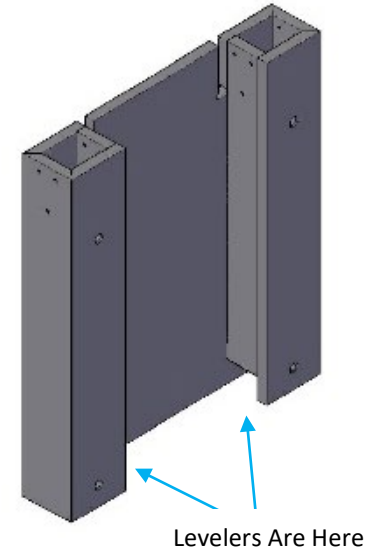
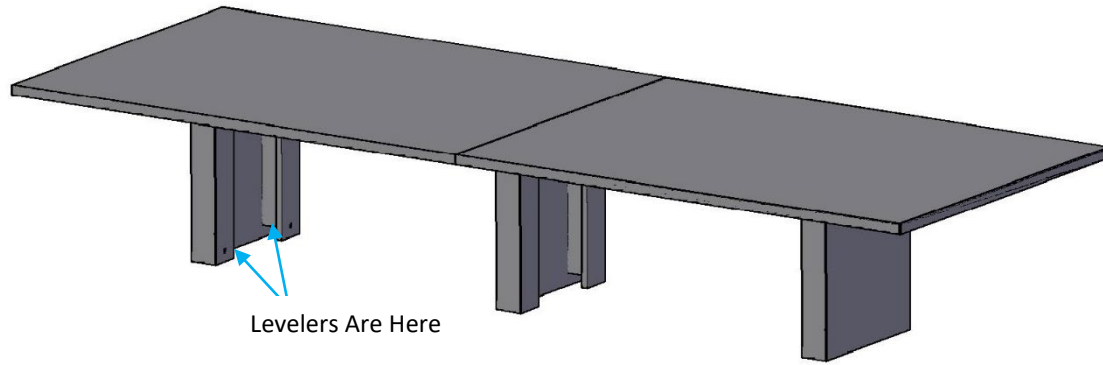


Place Joint Bolts in 1<sup>st</sup> then Fasten the Joints Plates



Jointer Plate

**Step 3:** Next, level the table using the 5mm Allen wrench.



**Step 4:** Push on Base Accent Panels and insert Thumb Screw from Step 1

