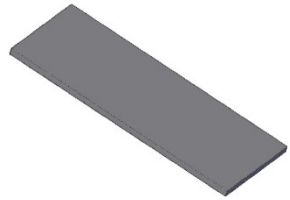
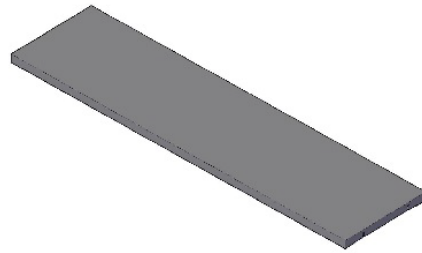


Blade One 10: 4 Piece Conference Table Assembly Instructions 96" to 120" Lengths

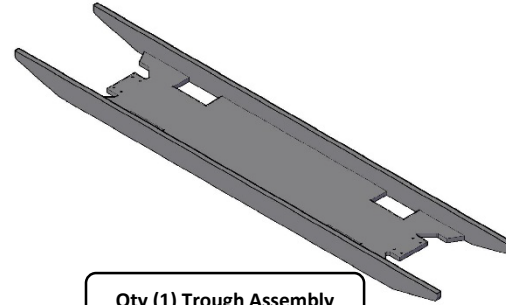
Parts List:



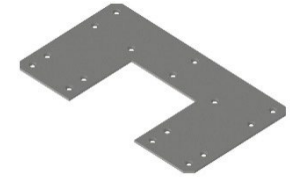
Qty (2) Short Tops



Qty (2) Long Tops



Qty (1) Trough Assembly



Qty (2) U- Jointer Plates



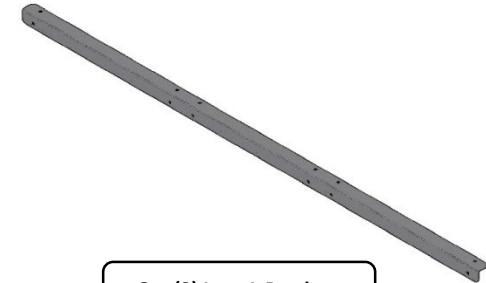
Qty (4) Jointer Plates



Qty (8) Jointer Bolts



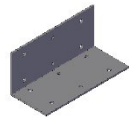
Qty (4) Short L-Brackets



Qty (2) Long L-Brackets



Qty (4) Small Angle Brackets



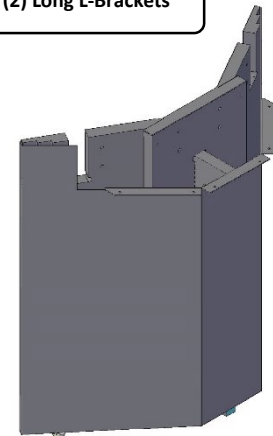
Qty (2) Large L-Brackets

Hardware Included

- Bag of #10 x 3/4 " Pan Head Screws
- Bag of 1/4"-20 x 2" Bolt and 1/4"-20 Nuts
- (8) 1/4"-20 x 1-3/4" Button Head Bolt, 1/4"-20 Nuts and 1/4" Star Washers
- (16) #8 x 5/8" Pan Head Screws
- (1) 29mm Silver Polycom Grommet(Optional)
- Velcro (For Metal Base Covers)

Tools Required

- (2) People
- Drill with phillips screw bit
- $\frac{5}{32}$ Allen Wrench
- 5mm Allen Wrench
- 7/16" Wrench
- Level

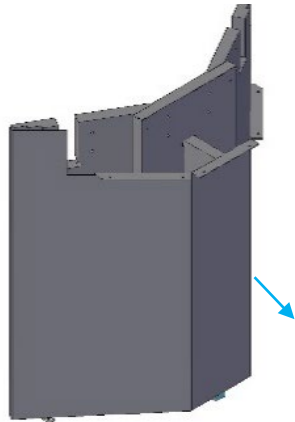


Qty (2) Bases

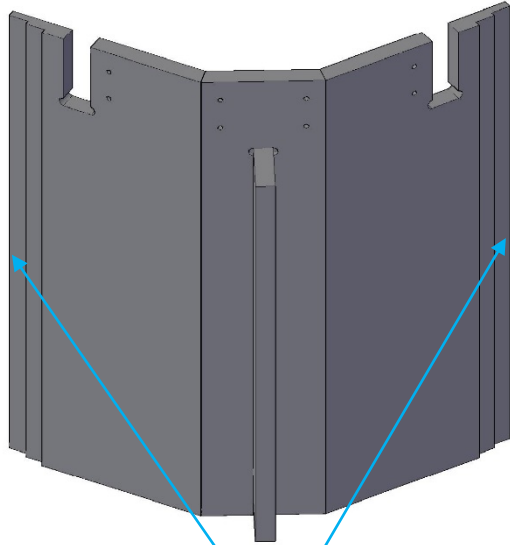
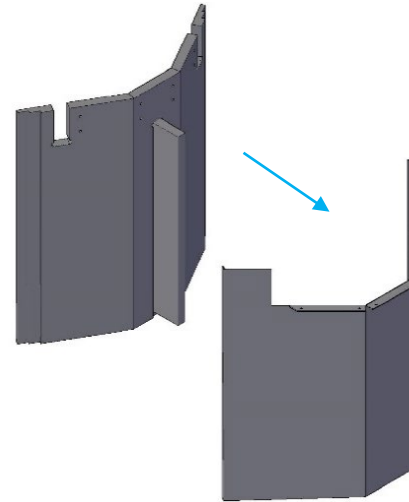
2298-1104P96120KR1

Step 1: Remove the accent cover off of the bases by pulling it off. Next, Using the supplied Velcro with Self-Stick Adhesive on it, Place the Velcro on the outside of the base and on the inside of the accent cover along the length of the vertical edge

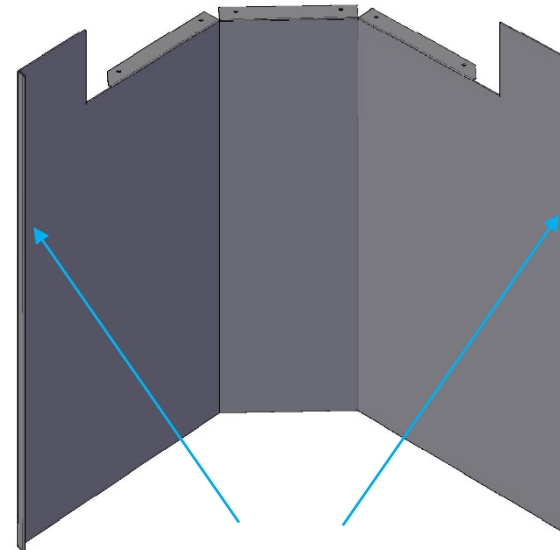
Base with Accent Cover



Base with Accent Cover Removed

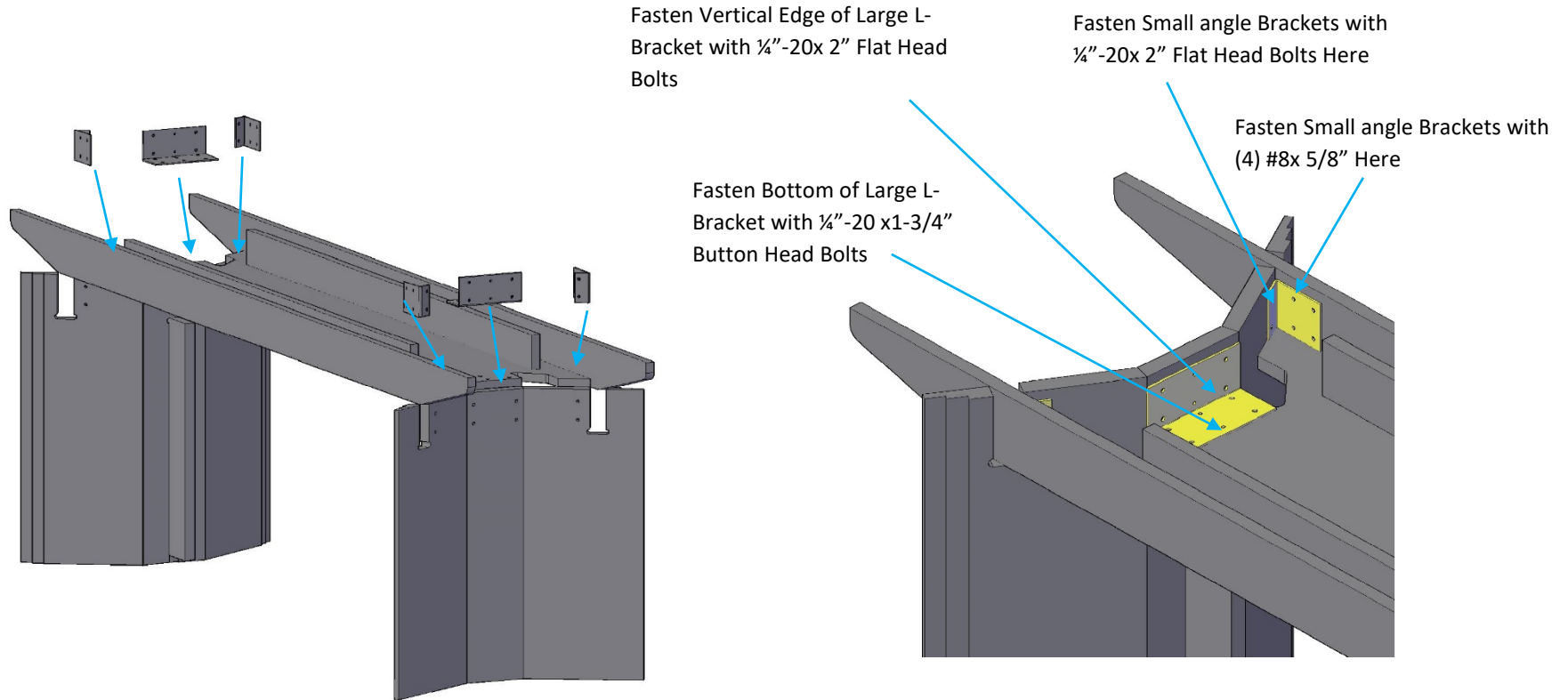


Attach Velcro here

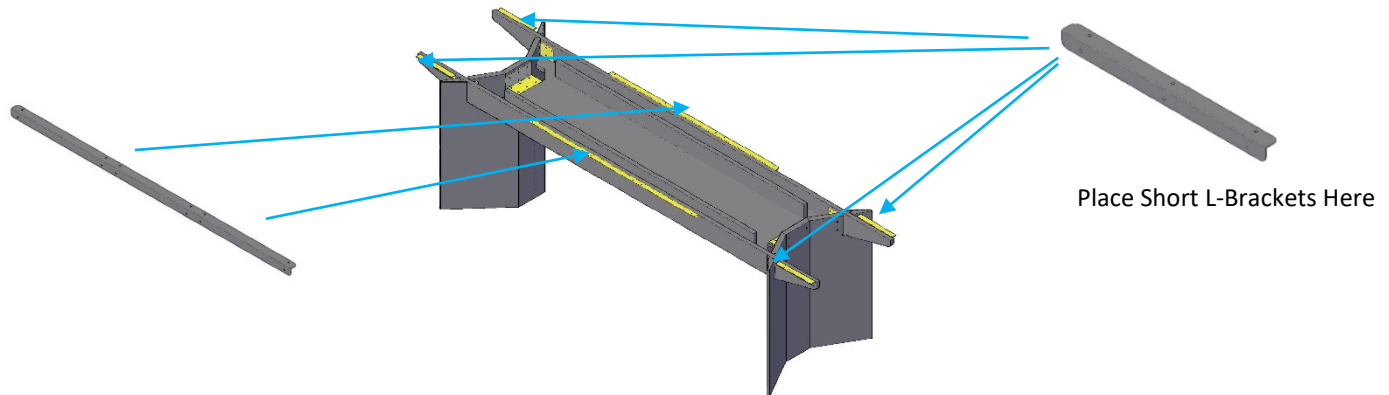


Attach Velcro here

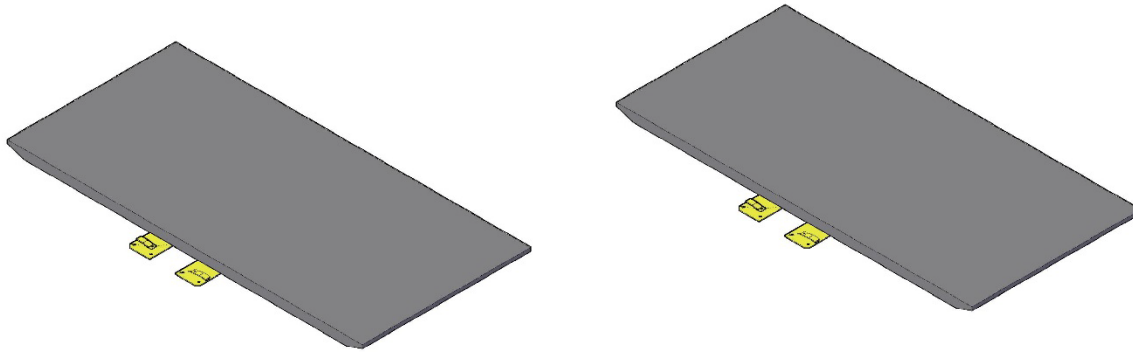
Step 2: Bolt together the (2) Bases to the Trough assembly using the 1/4"-20 x 2" Bolts , 1/4" -20 x 1-3/4" Bolts, 1/4"-20 Nuts, Large L-Brackets, Small Angle Brackets, and #8 x 5/8" Pan Head Screws



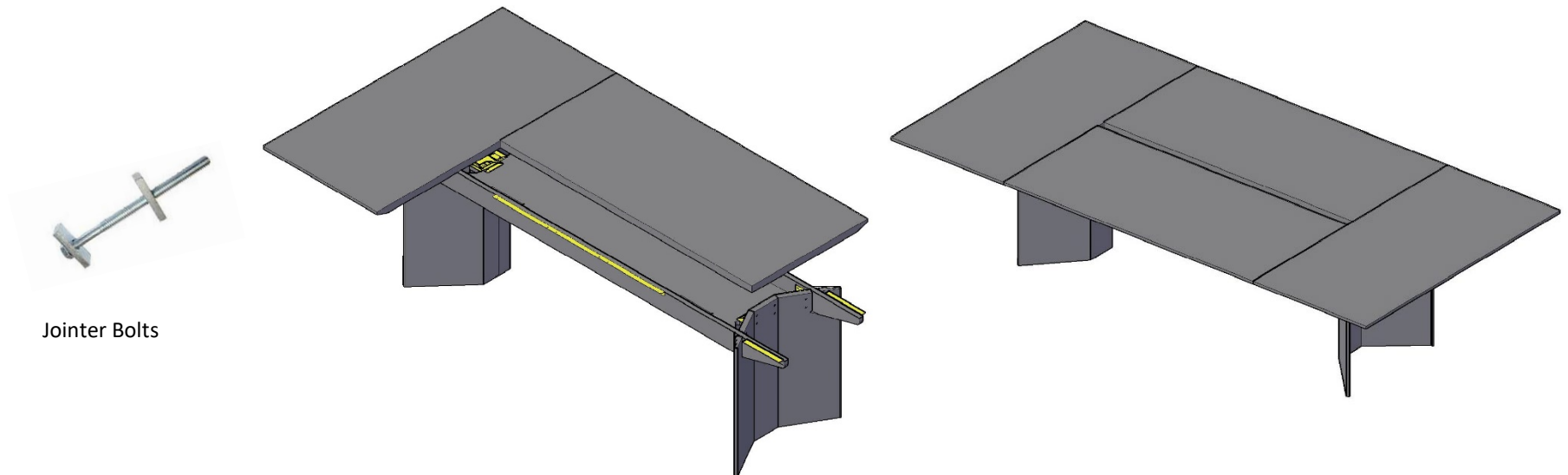
Step 3: Attach the Short L- Brackets and the Long L-Brackets to the Trough using the Silver #8 x 3/4" Pan Head Screws. Evenly spacing Long L-Brackets.



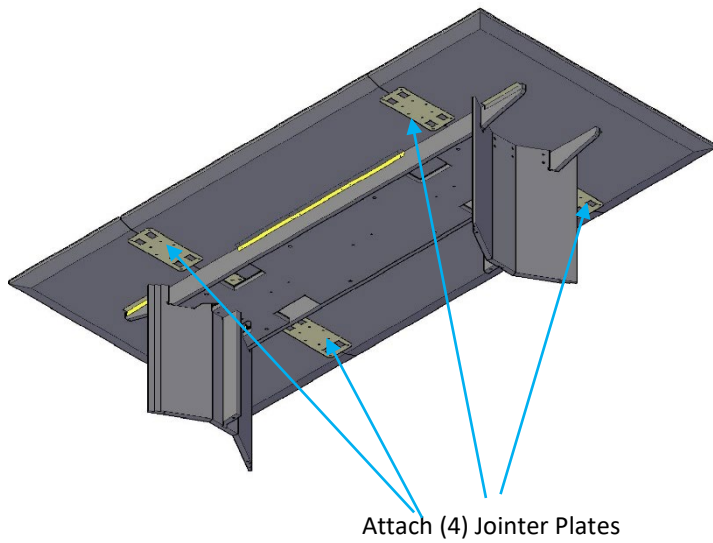
Step 4: Next, fastened the U-Jointer Plate to the short tops using the #10 x 3/4" Pan Head Screws.



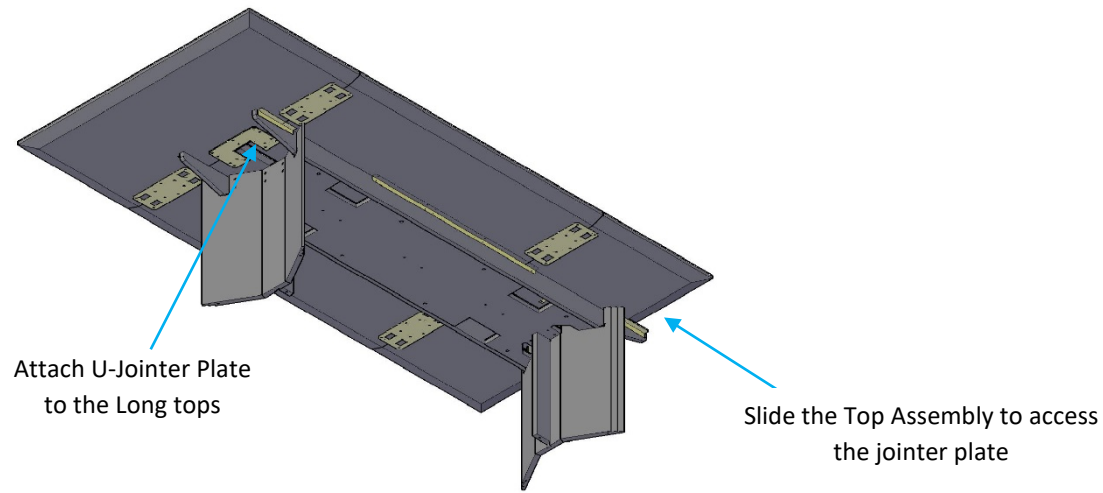
Step 5: Using the supplied Joints Bolts and a 7/16" Wrench, fasten the tops together (Note: Do Not Attach the Tops to the L-Brackets at this time!)



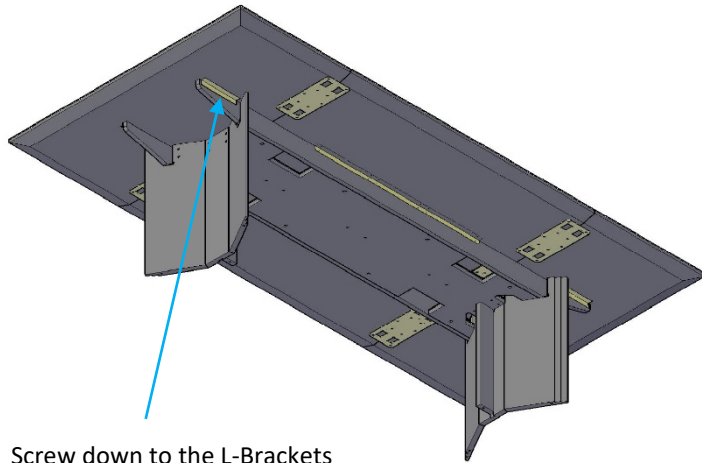
Step 6: Fasten the (4) Jointer Plates to the tops using the provide #10 X 3/4" Pan Head Screws.



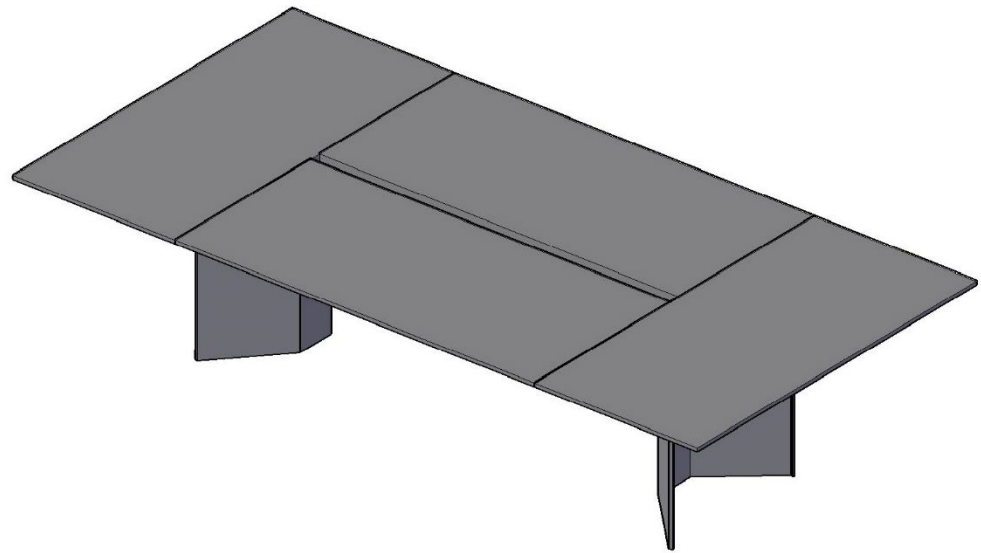
Step 7: Next slide the assembled tops to the side so the U-Jointer Plate can be fastened. Repeat for the opposite side.



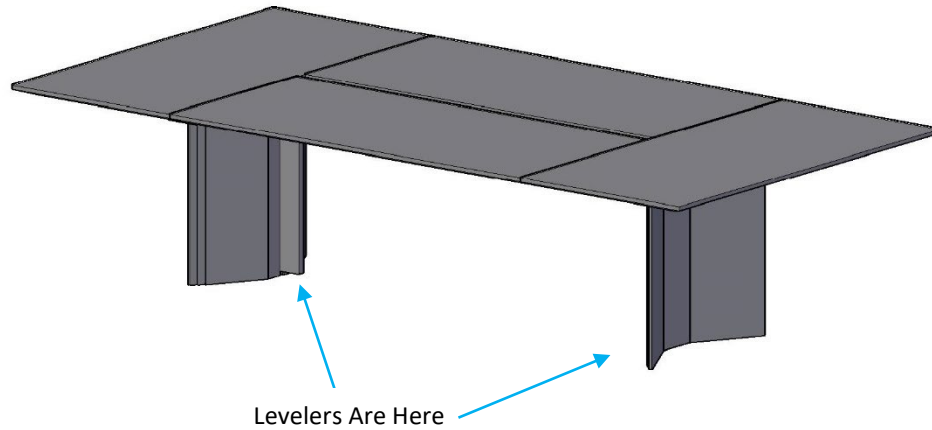
Step 8: Now, center the top assembly on the trough assembly. Next, fasten the top assembly to the L-Brackets with the provided #10 X 3/4" Pan Head Screws.



Screw down to the L-Brackets
using the #10 X 3/4" Screws



Step 9: Level the table using the 5mm Allen Wrench. Next (If Applicable) install all power ports and route wires down the base.



Step 9: When the Table is completely wired, install the Base Covers. Once the base covers are installed, using the Silver #10 x 3/4" screws, fasten the covers to the underside of the trough.

