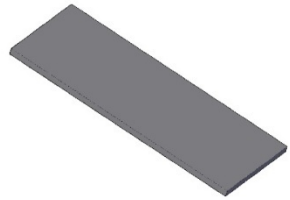
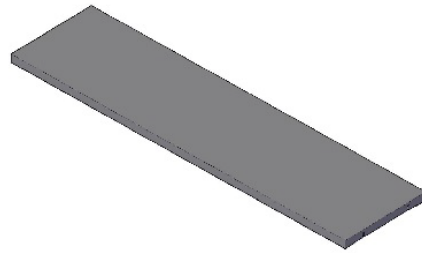


## Blade One 10: 4 Piece Conference Table Assembly Instructions 144" to 192" Lengths

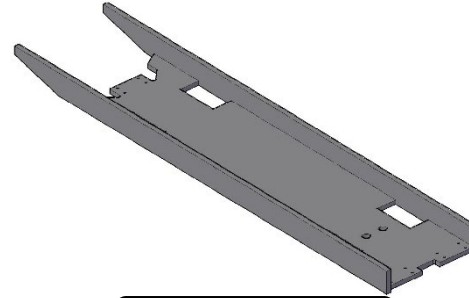
### Parts List:



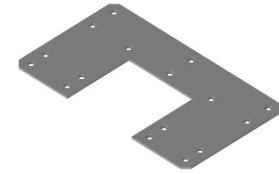
Qty (3) Short Tops



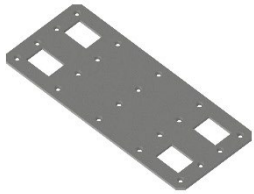
Qty (4) Long Tops



Qty (2) Trough Assembly



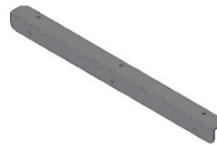
Qty (4) U-Jointer Plates



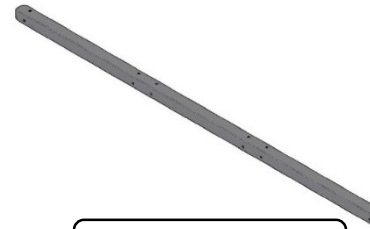
Qty (8) Jointer Plates



Qty (16) Jointer Bolts



Short L-Brackets



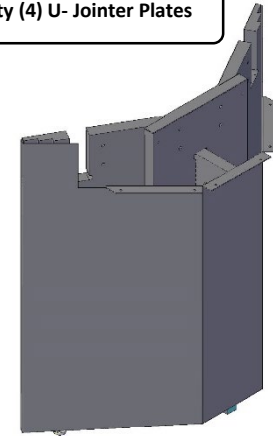
Long L-Brackets



Qty (4) Small Angle Brackets



Qty (4) Large L-Brackets



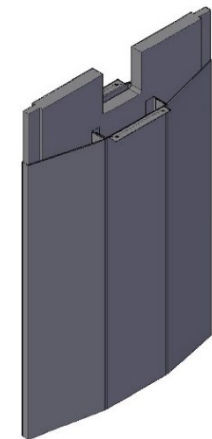
Qty (2) Bases

### Hardware Included

- Bag of #10 x 3/4" Pan Head Screws
- Bag of 1/4"-20 x 2" Bolt and 1/4"-20 Nuts
- (32) 1/4"-20 x 1-3/4" Button Head Bolt, 1/4"-20 Nuts and 1/4" Star Washers
- (16) #8 x 5/8" Pan Head Screws
- Velcro (For Metal Base Covers)

### Tools Required

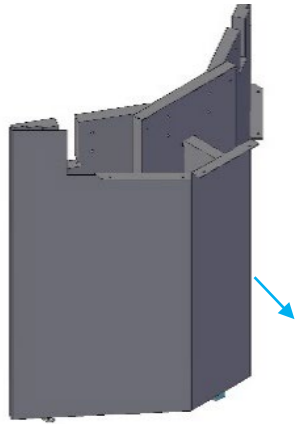
- (2) People
- Drill with phillips screw bit
- 5/32" Allen Wrench
- 5mm Allen Wrench
- 7/16" Wrench
- Level



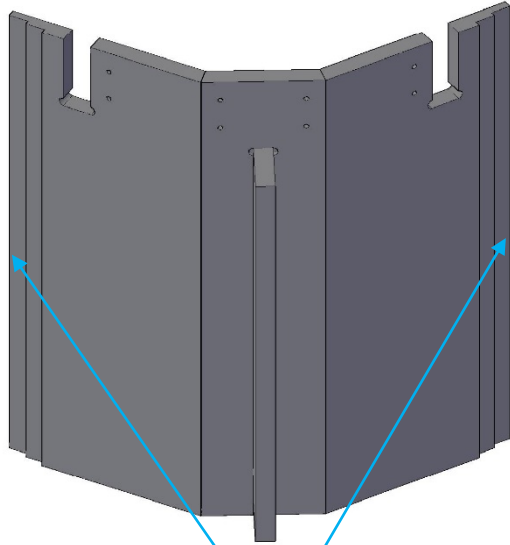
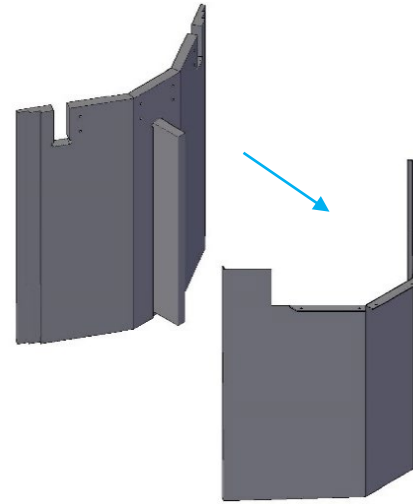
Qty (1) Mid-Base

**Step 1:** Remove the accent cover off of the bases by pulling it off. Next, Using the supplied Velcro with Self-Stick Adhesive on it, Place the Velcro on the outside of the base and on the inside of the accent cover along the length of the vertical edge

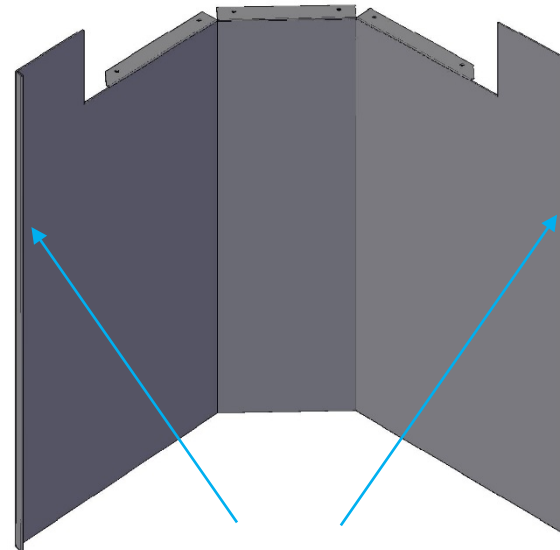
Base with Accent Cover



Base with Accent Cover Removed

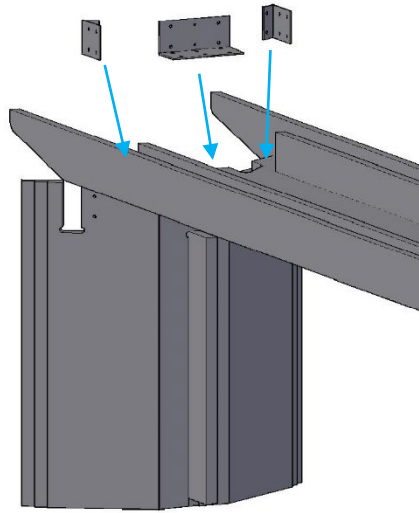


Attach Velcro here



Attach Velcro here

**Step 2:** Bolt together the (2) Bases to the Trough assembly using the 1/4"-20 x 2" Bolts , 1/4" -20 x 1-3/4" Bolts, 1/4"-20 Nuts, Large L-Brackets, Small Angle Brackets, and #8 x 5/8" Pan Head Screws

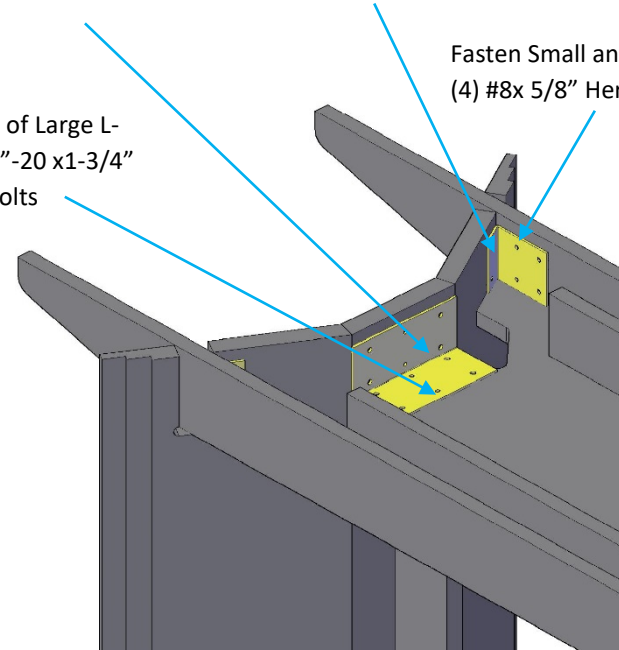


Fasten Vertical Edge of Large L-Bracket with 1/4"-20x 2" Flat Head Bolts

Fasten Small angle Brackets with 1/4"-20x 2" Flat Head Bolts Here

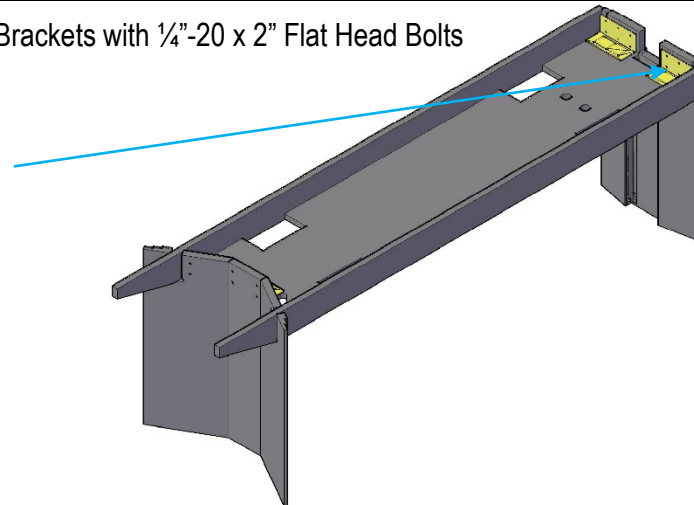
Fasten Bottom of Large L-Bracket with 1/4"-20 x1-3/4" Button Head Bolts

Fasten Small angle Brackets with (4) #8x 5/8" Here

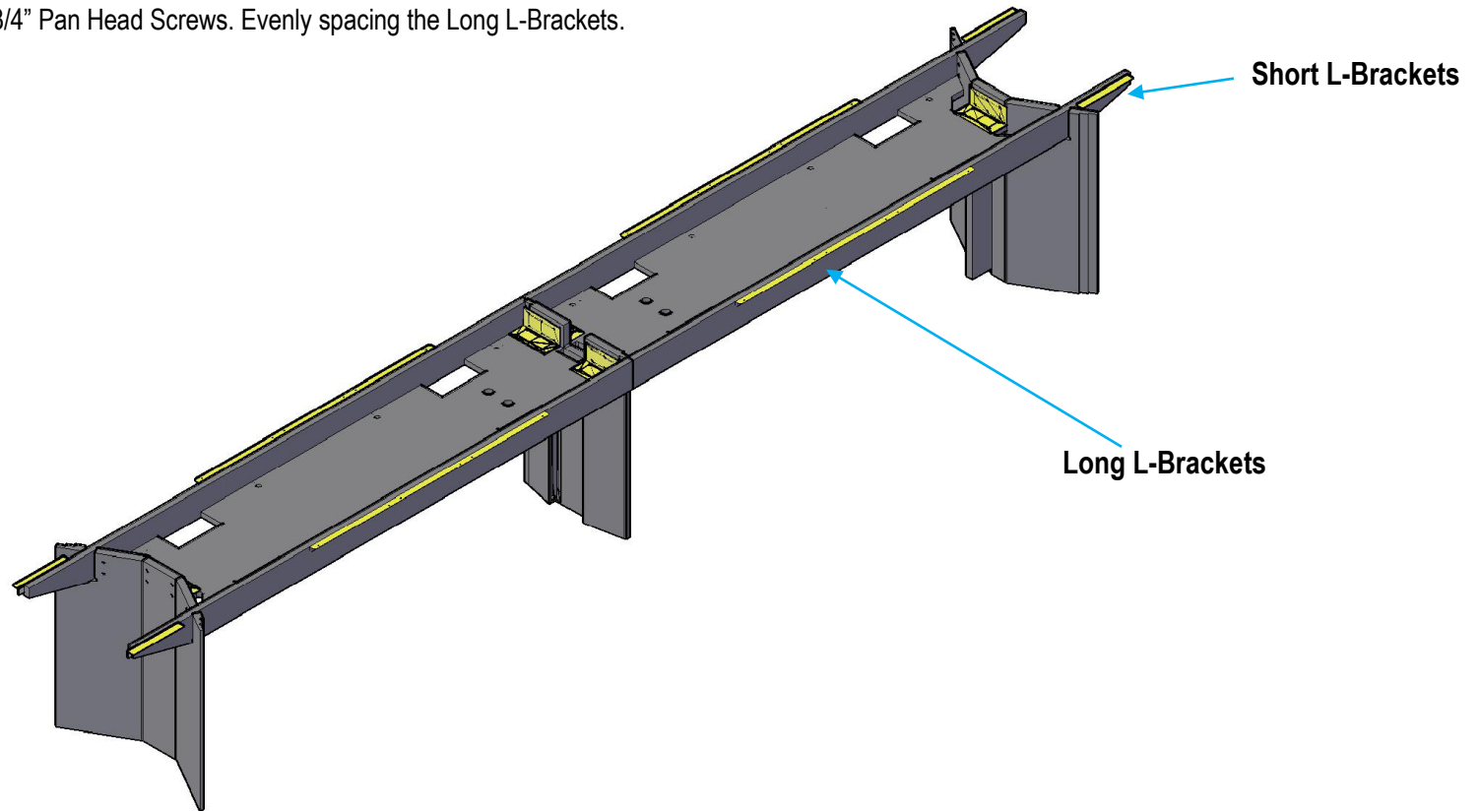


**Step 3:** Bolt together Mid base to the trough section using the Large L-Brackets with 1/4"-20 x 2" Flat Head Bolts

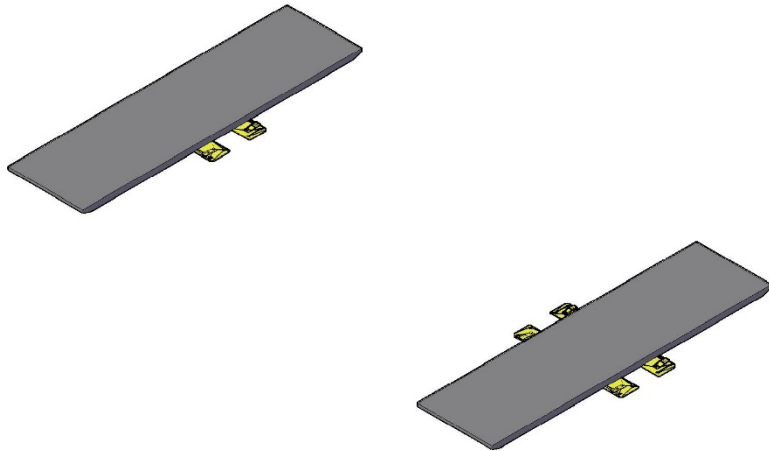
Fasten Vertical Edge of Large L-Bracket with 1/4"-20x 2" Flat Head Bolts



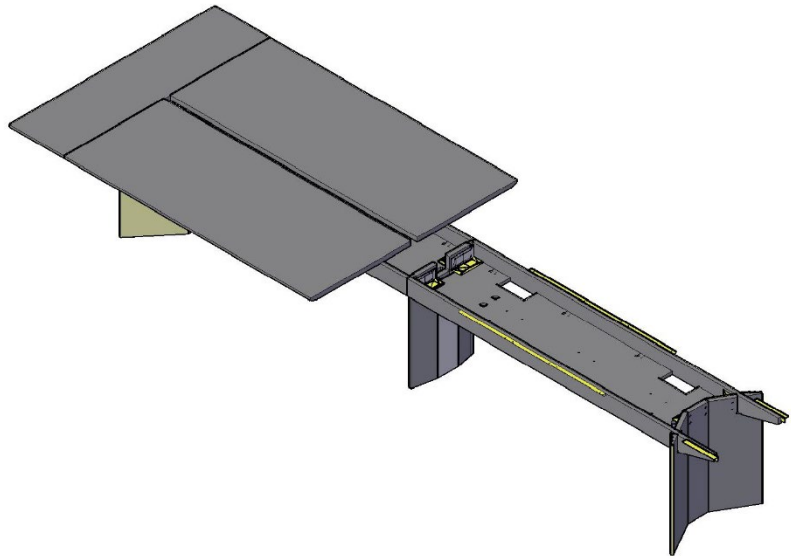
**Step 4:** Bolt together the remaining trough section to the Mid base along with the remaining Base. Also, install the Short L-Brackets and the Long L-Brackets to the trough section using the #10 x 3/4" Pan Head Screws. Evenly spacing the Long L-Brackets.



**Step 5:** Next fasten the U-Jointer Plates to the short tops using the #10 X 3/4" Flat Head Screws.

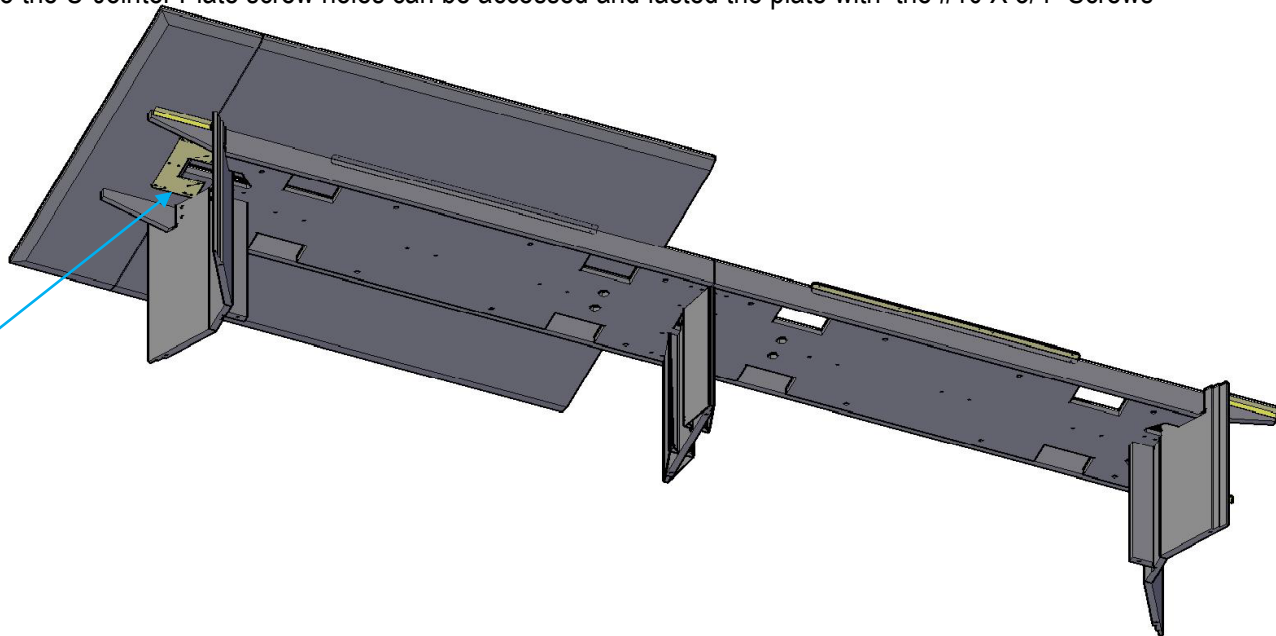


**Step 6:** Using the supplied Joints Bolts and a 7/16" Wrench, fasten the tops together as shown (**Note: Do not attach the tops to the L-Brackets at this time!**)



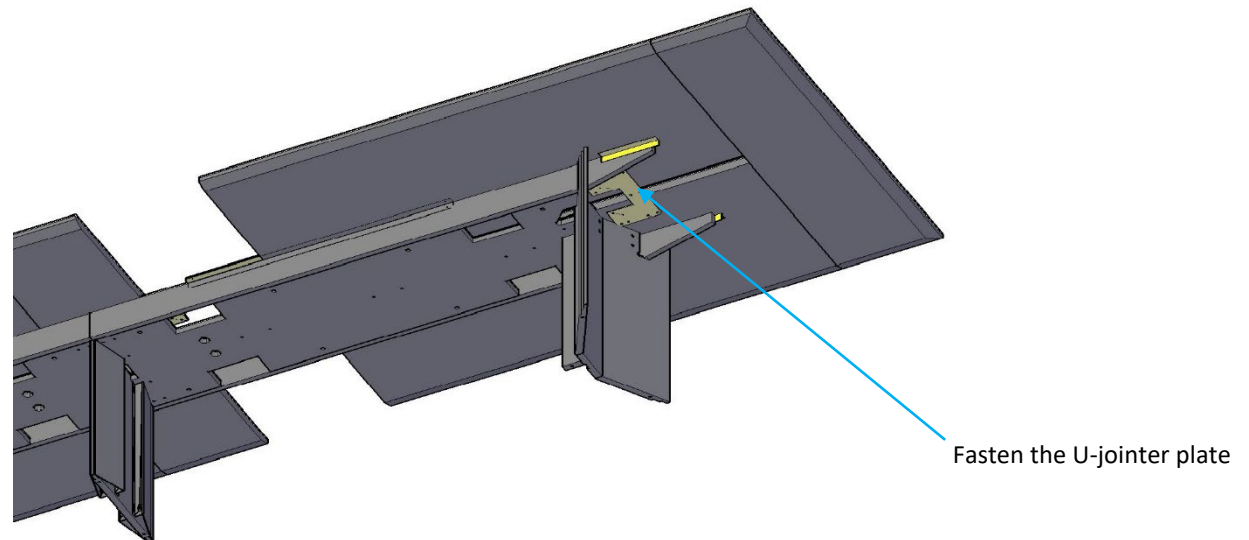
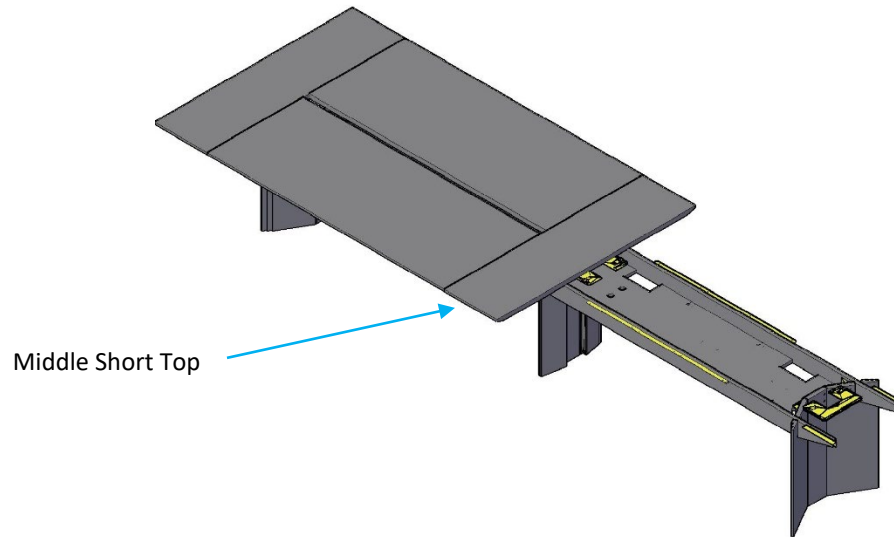
Joints Bolt

**Step 7:** Now slide the tops so the U-Jointer Plate screw holes can be accessed and fastened the plate with the #10 X 3/4" Screws

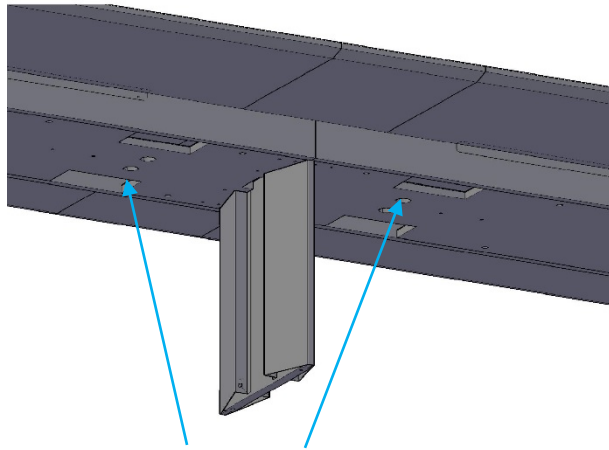


Fasten U-Jointer Plate

**Step 8:** Attach the middle short top to the tops in Step 7. Next, similar to Step 6 attach the remaining tops with the provided Jointer Bolts. Now Slide the tops so the U-Jointer plate can be attached using the #10 X 7/8" screws.

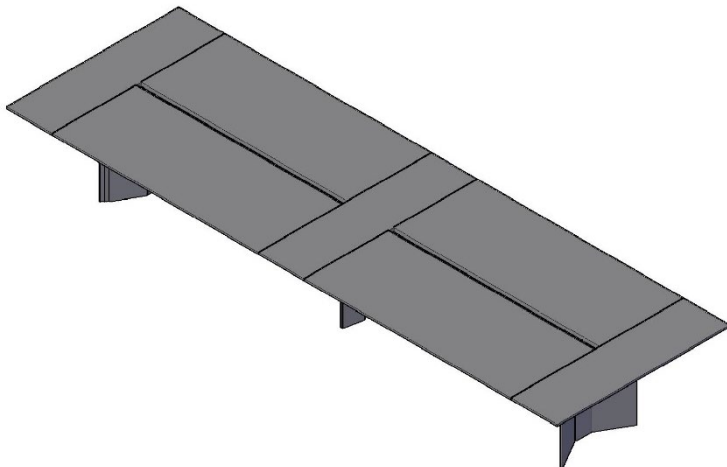


**Step 9:** Fasten the U-Jointer plates to the Middle Top by using the clearance holes in the trough

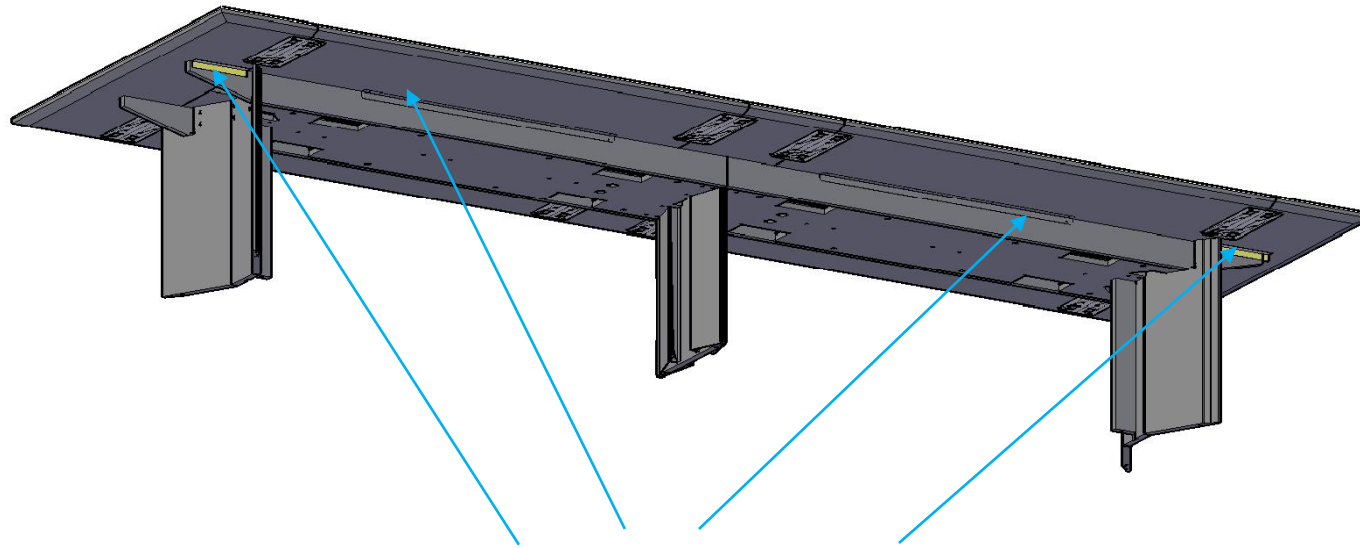


Use access holes to fasten U-Jointer Plate

**Step 10:** Next, attach the remaining jointer plates to the tops.

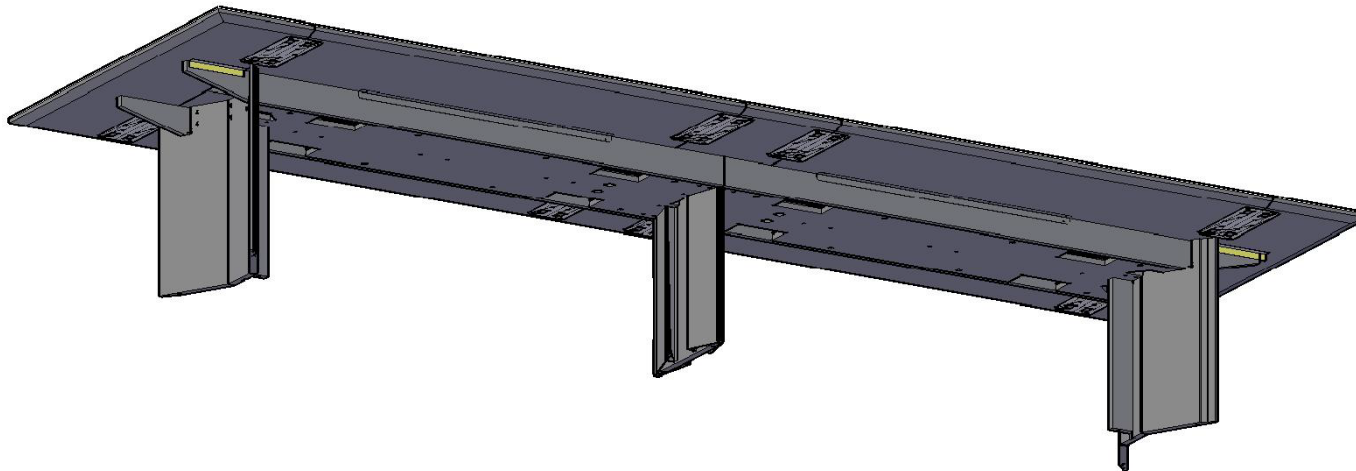


**Step 11:** Next, Fasten the tops down to the L-Brackets using the #10x 3/4" screws



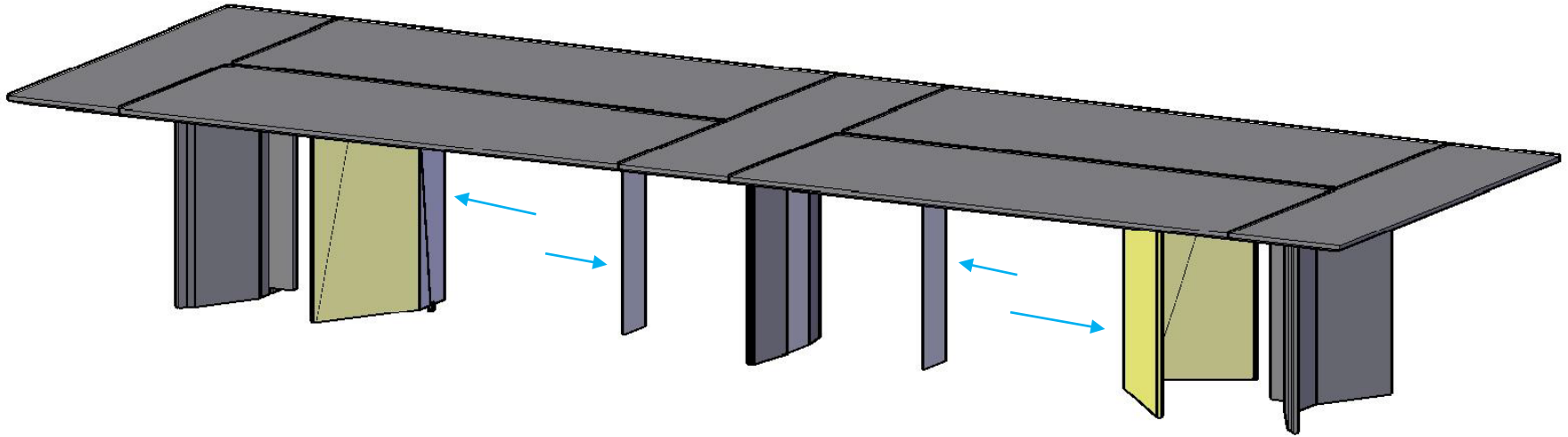
Attach Tops to the L-Brackets

**Step 12:** Level the table using the 5mm Allen Wrench. Next (If Applicable) install all power ports and route wires down the base.





**Step 13:** When the Table is completely wired, install the Base Covers. Once the base covers are installed, using the Silver #10 x 3/4" screws, fasten the covers to the underside of the trough.



**You are Finished!**

